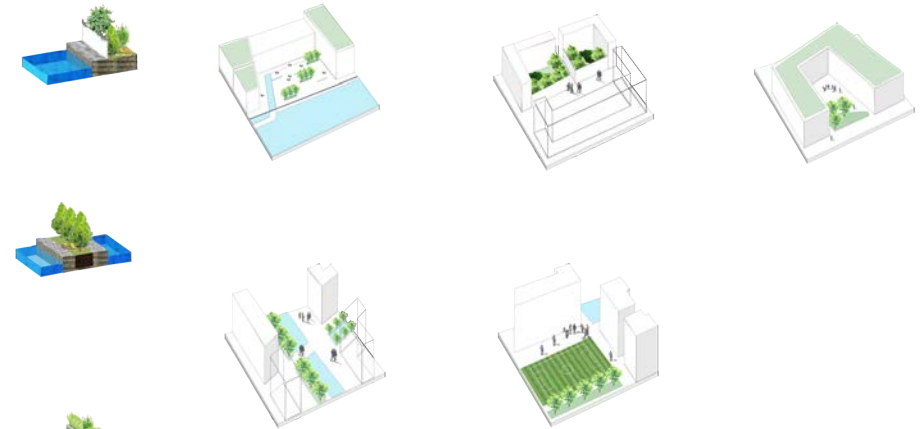


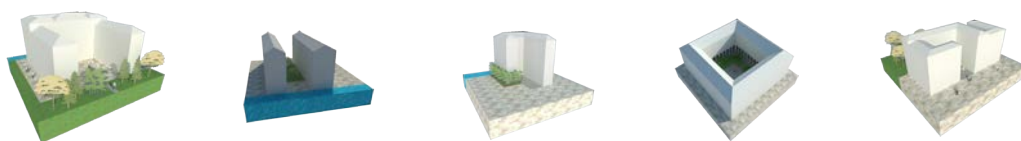
# INSULA MARITTIMA

## Venice, Italy



This master plan includes residential, commercial, and ultimately functional public green spaces and sports areas. The commercial area provides needed retail for residents and visitors. This half of the functional area will continue to be used as a port of discharge. The other half will be a tourist distributing centre, it could include hotels, water bus stations and Fiera buildings. The residential area will have two kinds of building style, both traditional and modern. The public space includes a green area, aesthetic landscape and a sports area which could separate the residential, commercial and functional areas.

To enhance the convenience of transportation for tourists and local people, a new transit line should be created. This project will provide a light rail line from the Marco Polo Airport to the historic centre, it will have a circle line linking each island and the terminal, situated at the Piazzale Roma. The proposal is to design a ring shape light rail around the project site before establishing 6 stations on each island respectively.

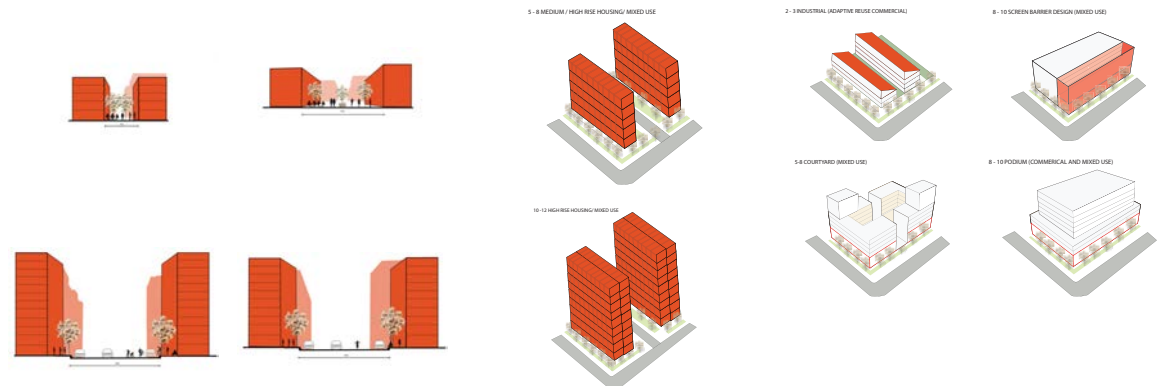
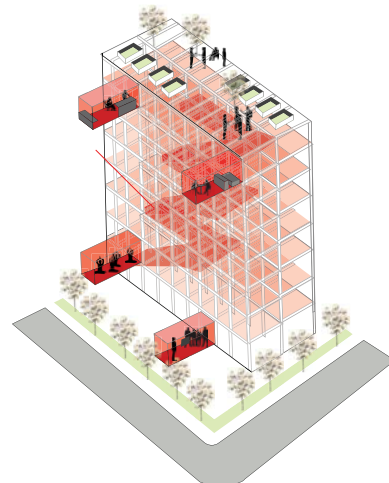


# ST PETER WestConnex

## Sydney, Australia



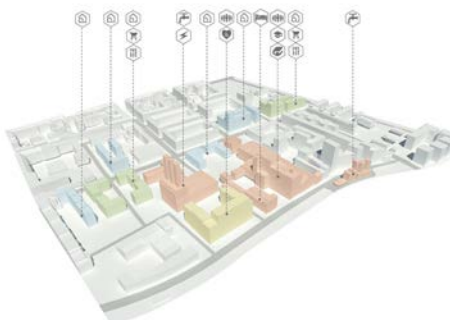
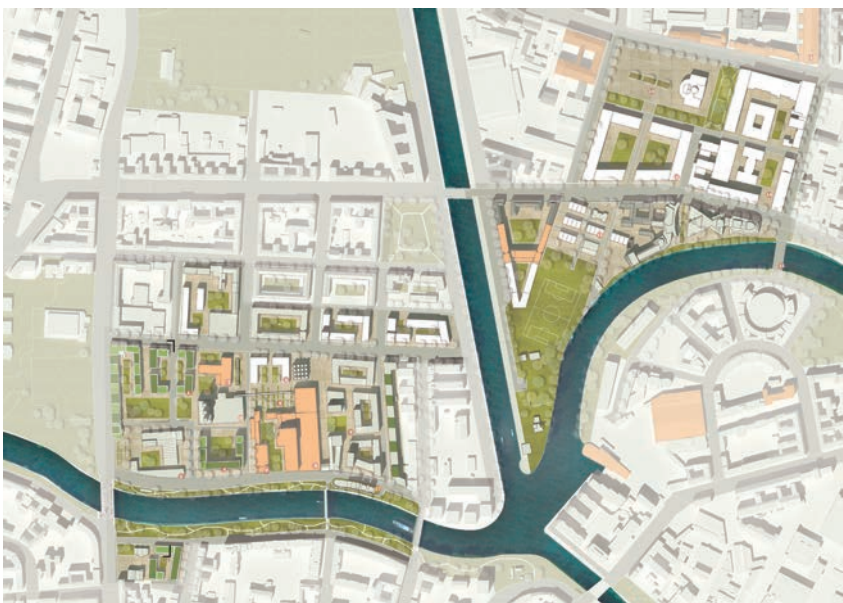
Located in Inner-West of Sydney, the Makers Precinct is situated on the former Alexandria Landfill site with strong connections to Sydney Park, the Alexandra Canal and numerous creative precincts. The Makers Precinct infuses life into a former derelict site by establishing a strong urban structure that is dynamic, adaptable and encourages creativity.





# CITY WEST

## Berlin, Germany



City West – A modern, compact centre  
City West is characterized as a knowledge and cultural centre which has been shaped by the Technical University of Berlin and numerous museums and the-



atres. By 2030, City West will be a core of innercity growth with high levels of innovation and a popular area with traditional and new forms of affordable housing. The study area of Charlottenburg and west Moabit has a long history where late nineteenth century buildings mixed with the modernist architecture, main challenges include site's large industrial land and infrastructure demand to respond to the future growth.