

OBAMA PRESIDENTIAL CENTER PRESIDENTIAL LIBRARY

Lu Mengyu

Vision:

The Barack Obama Foundation... will both plan and development a Presidential Centre for future activities, including the Presidential Library, a museum and broader campus, and engage in activities reflecting President's Obama's and the First Lady's values and priorities throughout his career in public service: expanding economic opportunity, inspiring and ethic of American citizenship, and promoting peace, justice and dignity throughout the world. The Foundation envisions a Presidential Centre that, through its mission, initiatives and physical and virtual presence, advances and interprets the themes of civic engagement, global perspective, health and wellness, environmental stewardship, public education, a spirit of innovation, and will become an anchor for economic development and cultivate a strong relationship with the library's surrounding community.



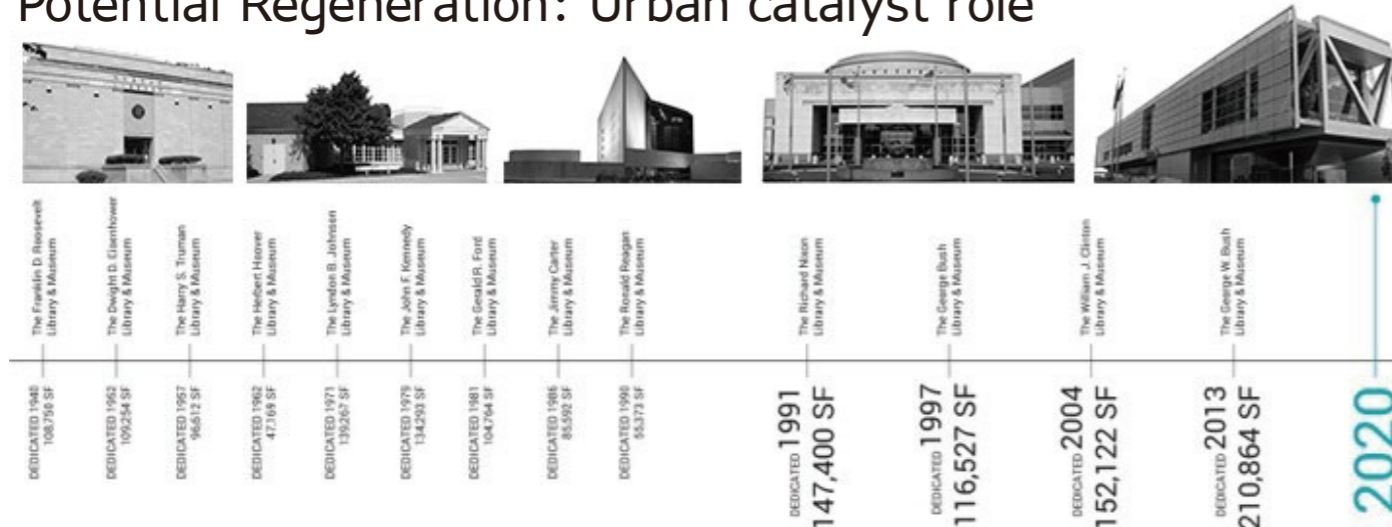
Themes:

Approach to understand the future role and outcome of the Obama Presidential Library has been considered in context of three themes:

Imaginability: Expectation of vision

Functionality: The Presidential library will have Functions and uses

Potential Regeneration: Urban catalyst role



Core Principles

Economic Engine

- Encourages smart, sustainable, and inclusive economic growth
- Anchors public and private investment
- Celebrates and leverages existing community assets
- Civic identity is shaped by community
- Identified as part of the fabric of the community

Functional

- Rational, purpose-driven design
- Attentive to site, infrastructure, and existing urban fabric
- Efficient in systems, materials, and operations
- State-of-the-art archives and museum
- Cost-effective

Accountable & Performance-Driven

- Responsible steward of the environment—immediate and global
- Energy-efficient building
- Exceeds LEED Platinum standards
- Sustainable practices
- Embodies principles of biomimicry to create a living building

Flexible & Forward-Thinking

- Agile, flexible, and relevant—continually reinventing itself
- Accommodates a variety of uses
- Is technologically responsive
- Uses best practices in sustainability, technology, and operations
- Exercises leadership and foresight, anticipating change

Technologically Advanced

- Extends digital footprint
- Next-generation platform
- New models for social interaction
- Can adapt with changes in technology

Unified Design Vision

- Consistently expresses design principles, mission, and vision
- Aligns with programmatic goals
- Communicates a clear and coherent message
- Integration of site and building design



Role and Outcome

The Presidential Library comprise of:

The Presidential Library to be managed by the NARA.
Maximum 70,000sqft (approximately 6,500sqm)

A museum

An outreach community centre

Total floor space of centre is expected to be about
200,000sqft (18,580sqm)

Expected outcome

Construction to cost about \$380 million

Provide approximately 3,280 construction jobs

Provide 100 new jobs with an annual payroll of \$4.2 million
Expected to receive approximately 800,000 visitors per year

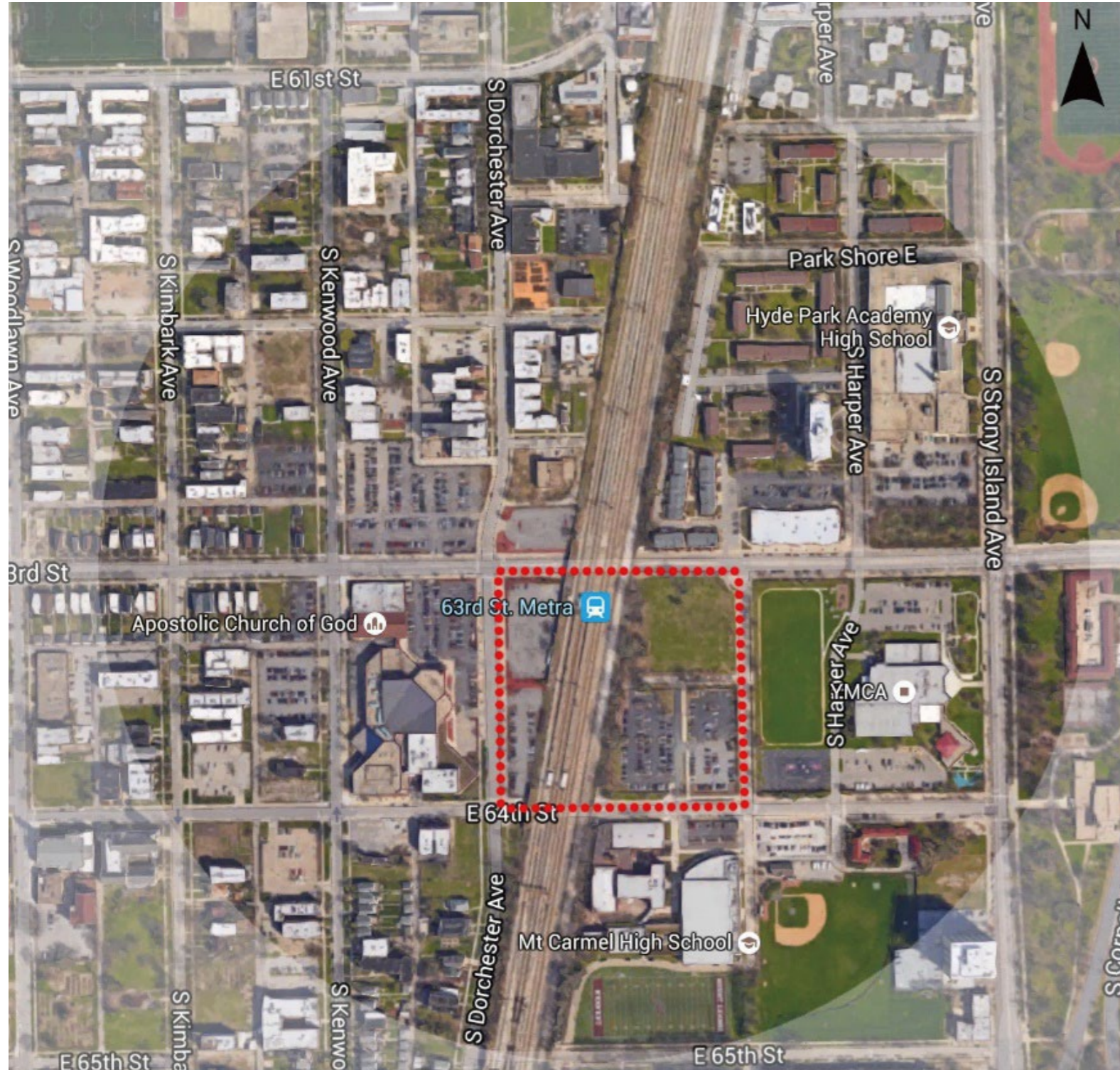
A continuing economic benefit to the community of \$220 million per year with 1,900 permanent jobs





OBAMA PRESIDENTIAL CENTER
 PRESIDENTIAL LIBRARY
 Lu Mengyu

JACKSON PARK SITE





OBAMA PRESIDENTIAL CENTER PRESIDENTIAL LIBRARY

Lu Mengyu

RAIL CONNECTIVITY

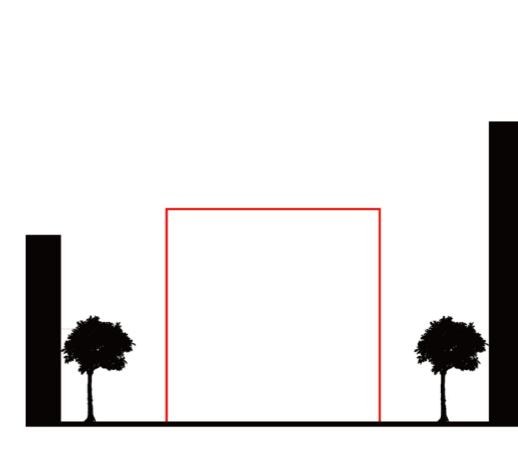
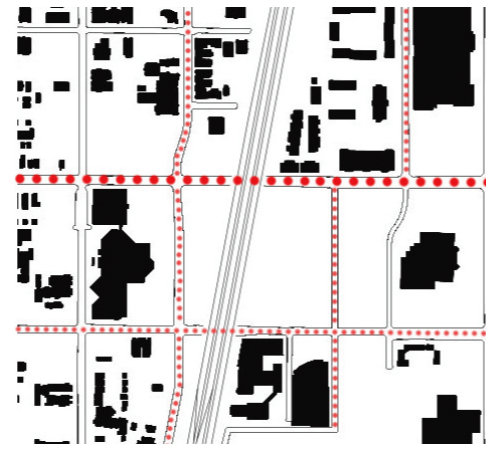
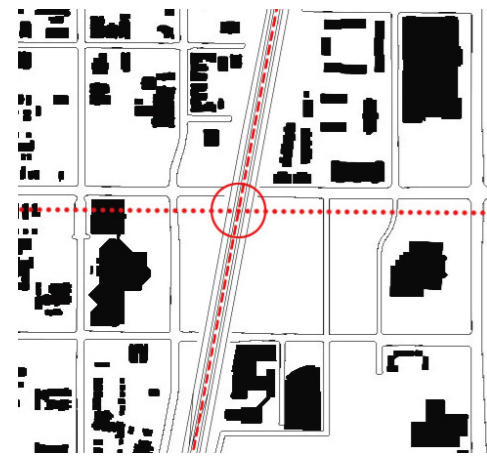
PEDESTRIAN & SURROUNDING USE

VEHICLE CONNECTIVITY

OPEN SPACE RELATIONSHIP & SURROUNDING USES

SCALE & BUILT FORM

KEY VIEWS



The railway line divides our site

Excellent access east-west and north-south

List all car parking spaces above ground

Area is defined by Jackson Park

Predominate scale of development in the area is 3/4 stories

Views exist along E63rd and E64st from west to east to the Jackson Park

The railway station is on our site

Excellent access to a variety of different uses in the area

Excellent connectivity east-west and north-south around the site

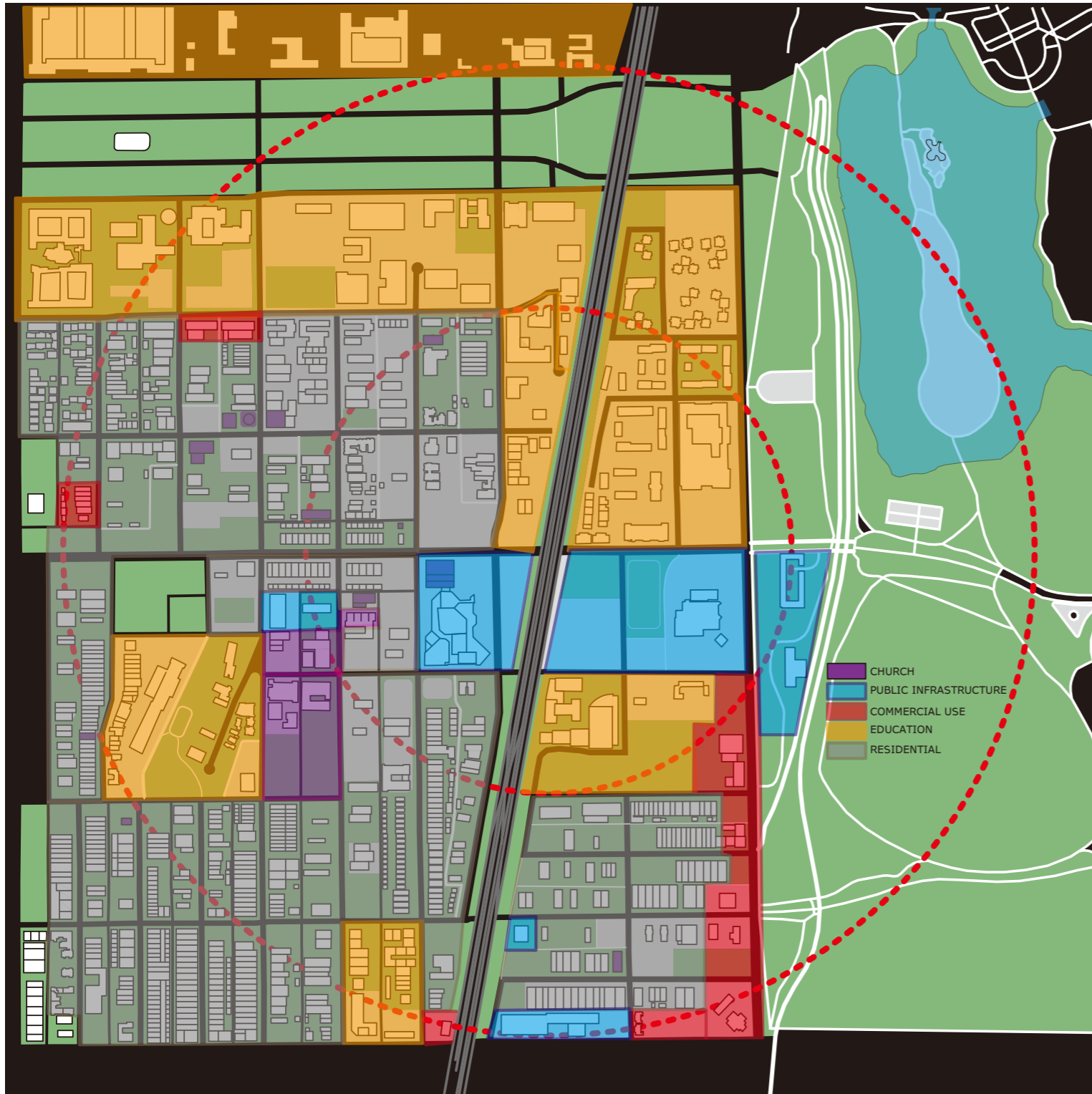
Avoid development within the Park



OBAMA PRESIDENTIAL CENTER PRESIDENTIAL LIBRARY

Lu Mengyu

Land Use



Proposed Land Use Site

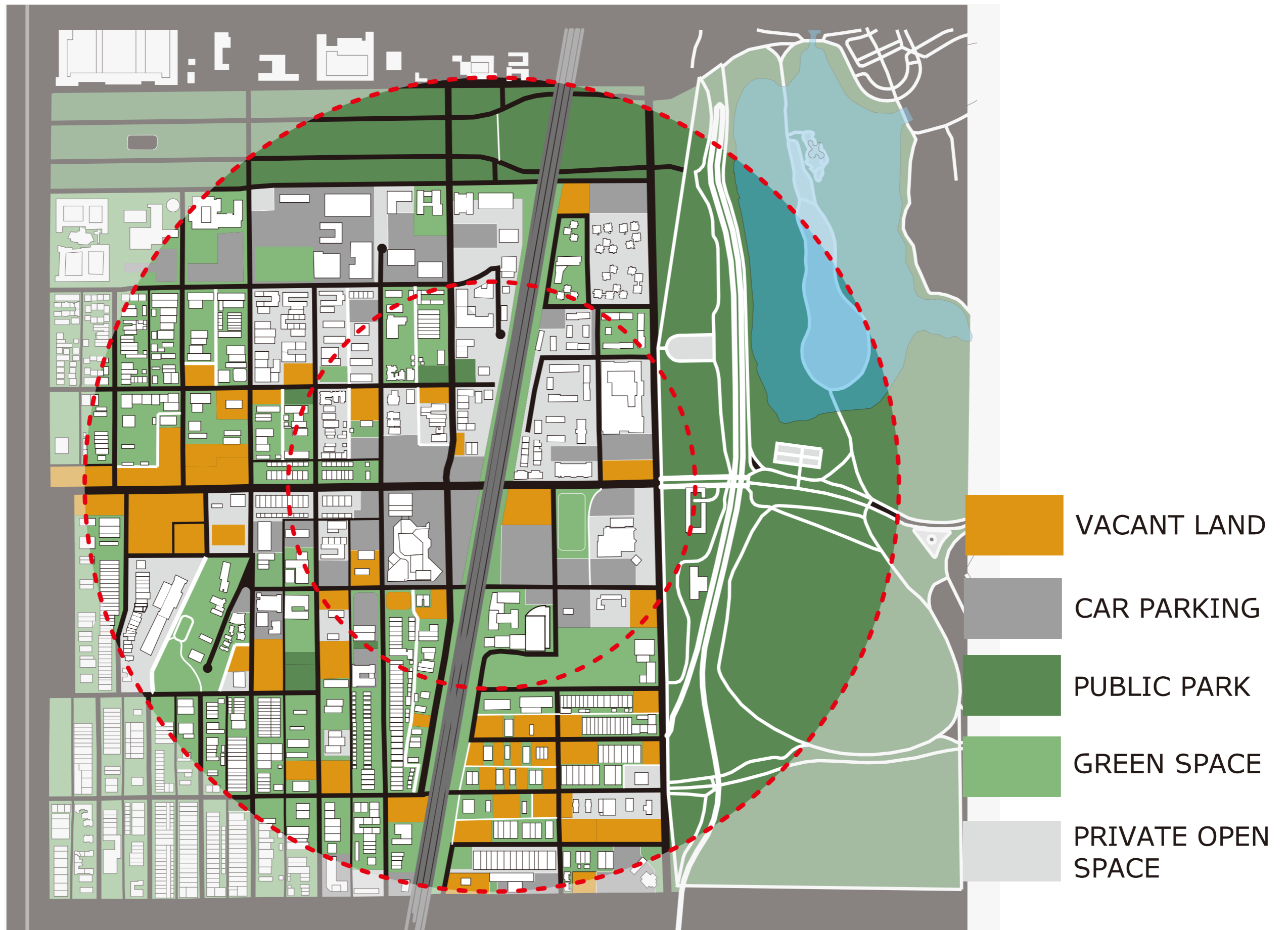




OBAMA PRESIDENTIAL CENTER PRESIDENTIAL LIBRARY

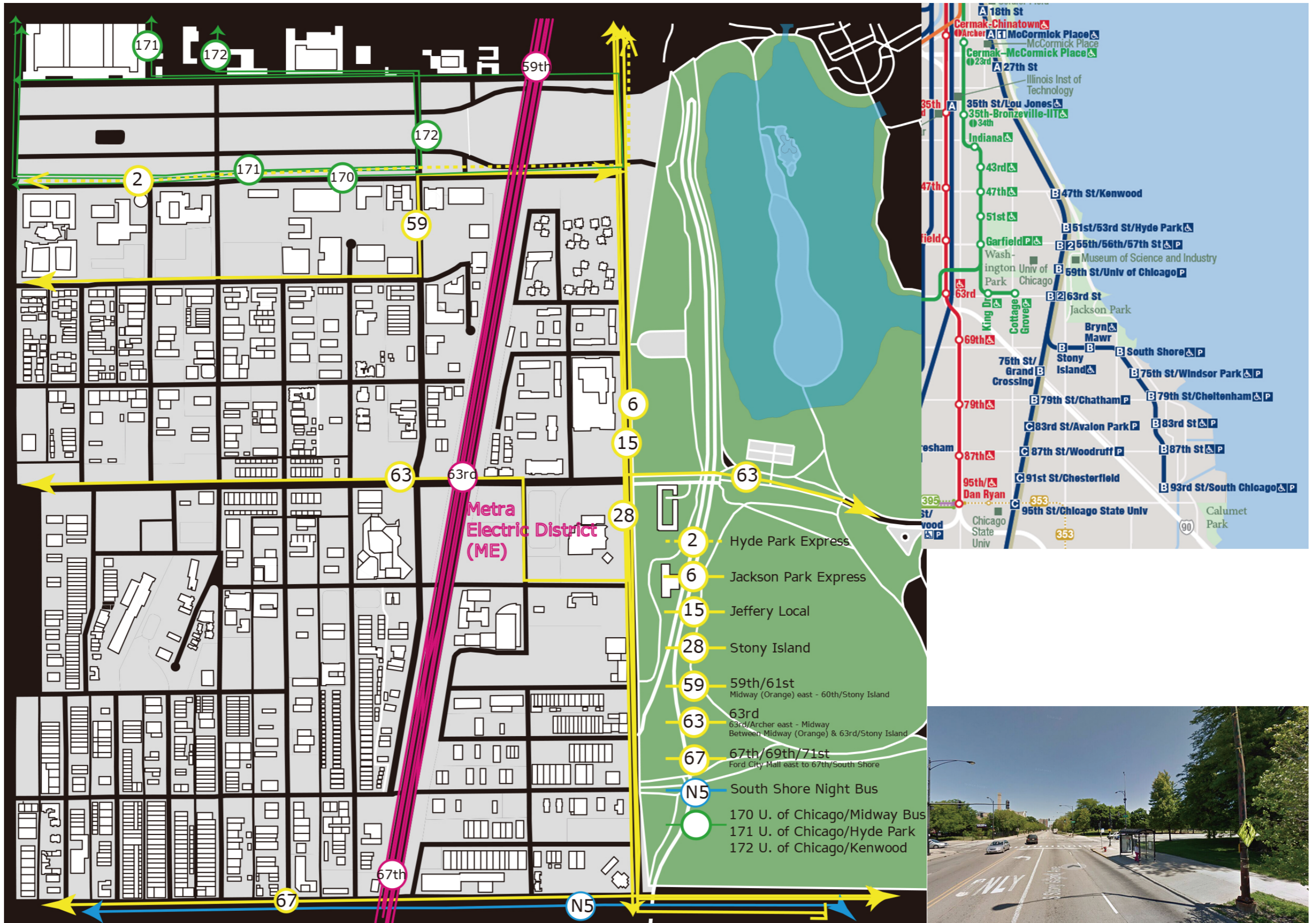
Lu Mengyu

Public Space
Vacant Land



Public Transport

OBAMA PRESIDENTIAL CENTER
PRESIDENTIAL LIBRARY
Lu Mengyu

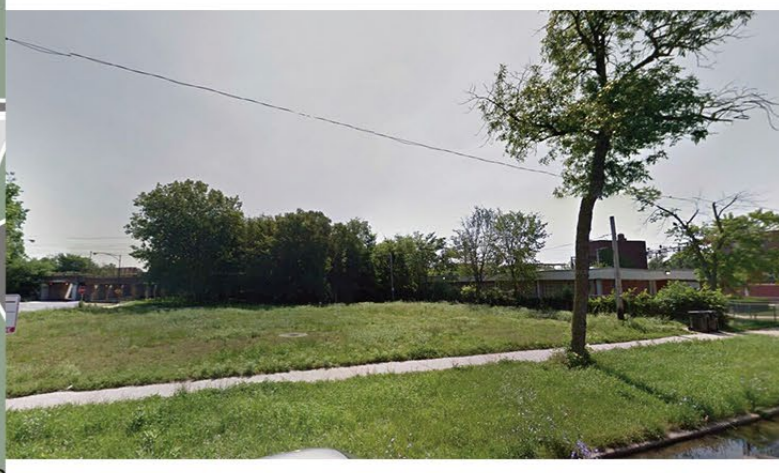
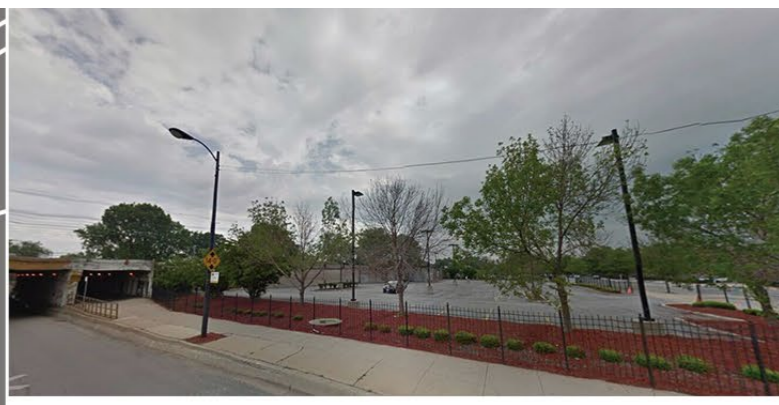
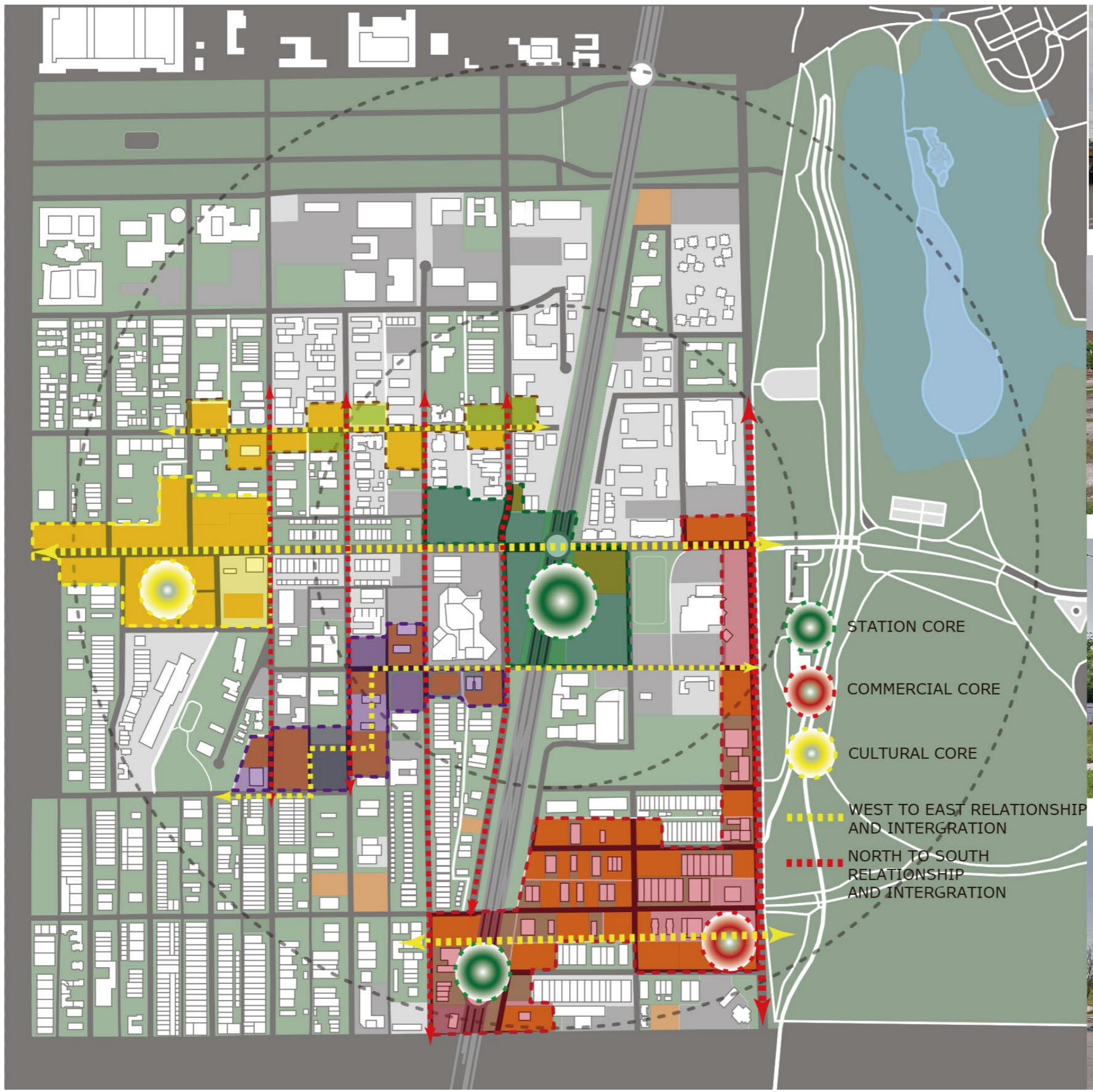


CHICAGO

OBAMA PRESIDENTIAL CENTER PRESIDENTIAL LIBRARY

Lu Mengyu

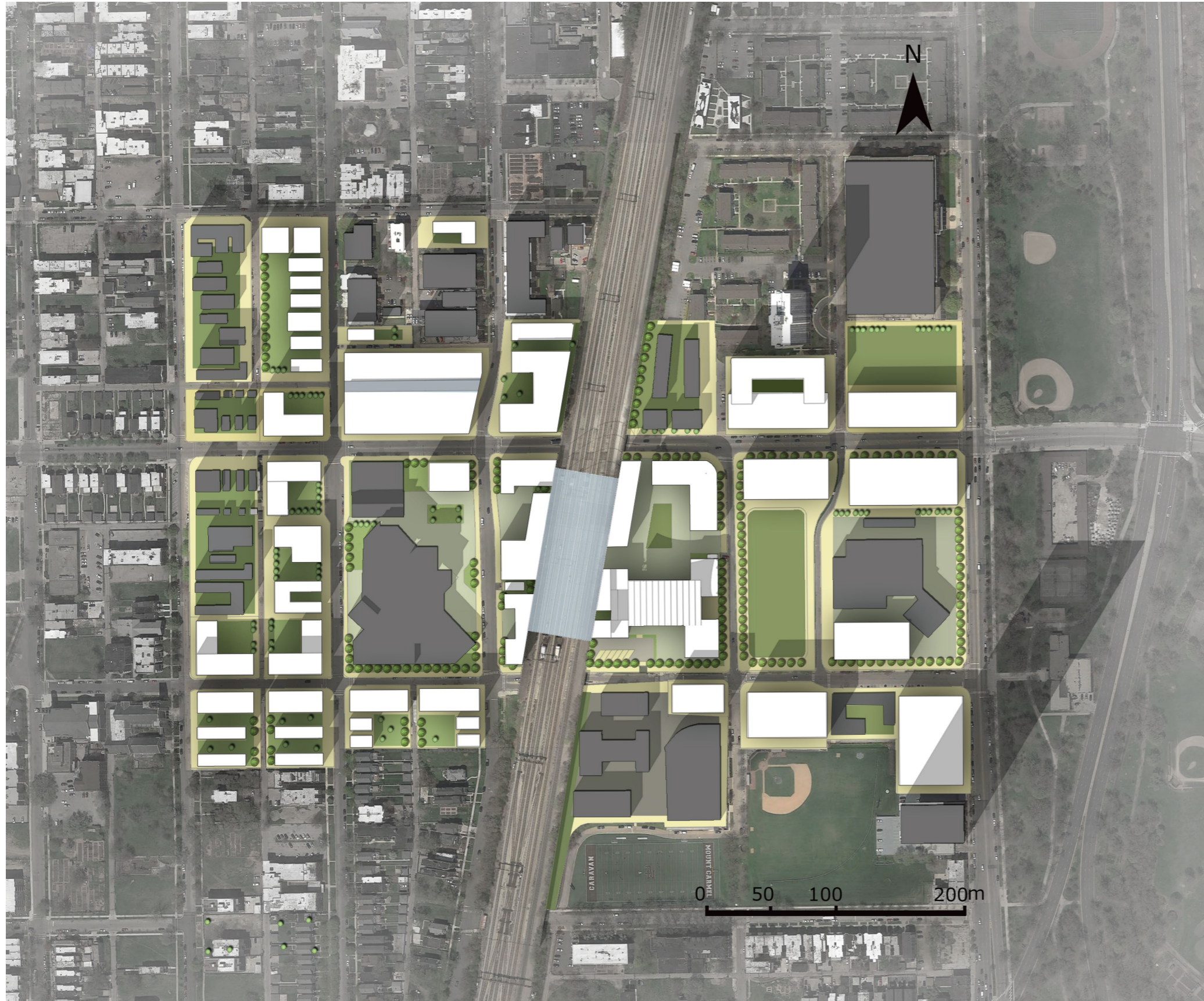
Concept Structure



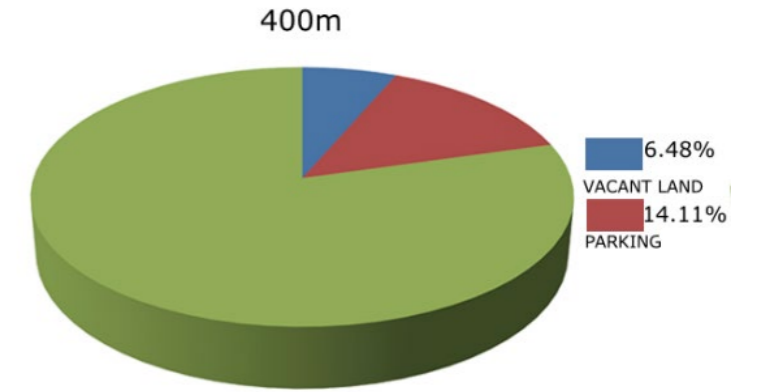


OBAMA PRESIDENTIAL CENTER
PRESIDENTIAL LIBRARY
Lu Mengyu

URBAN DESIGN FRAMEWORK



PROPOSAL



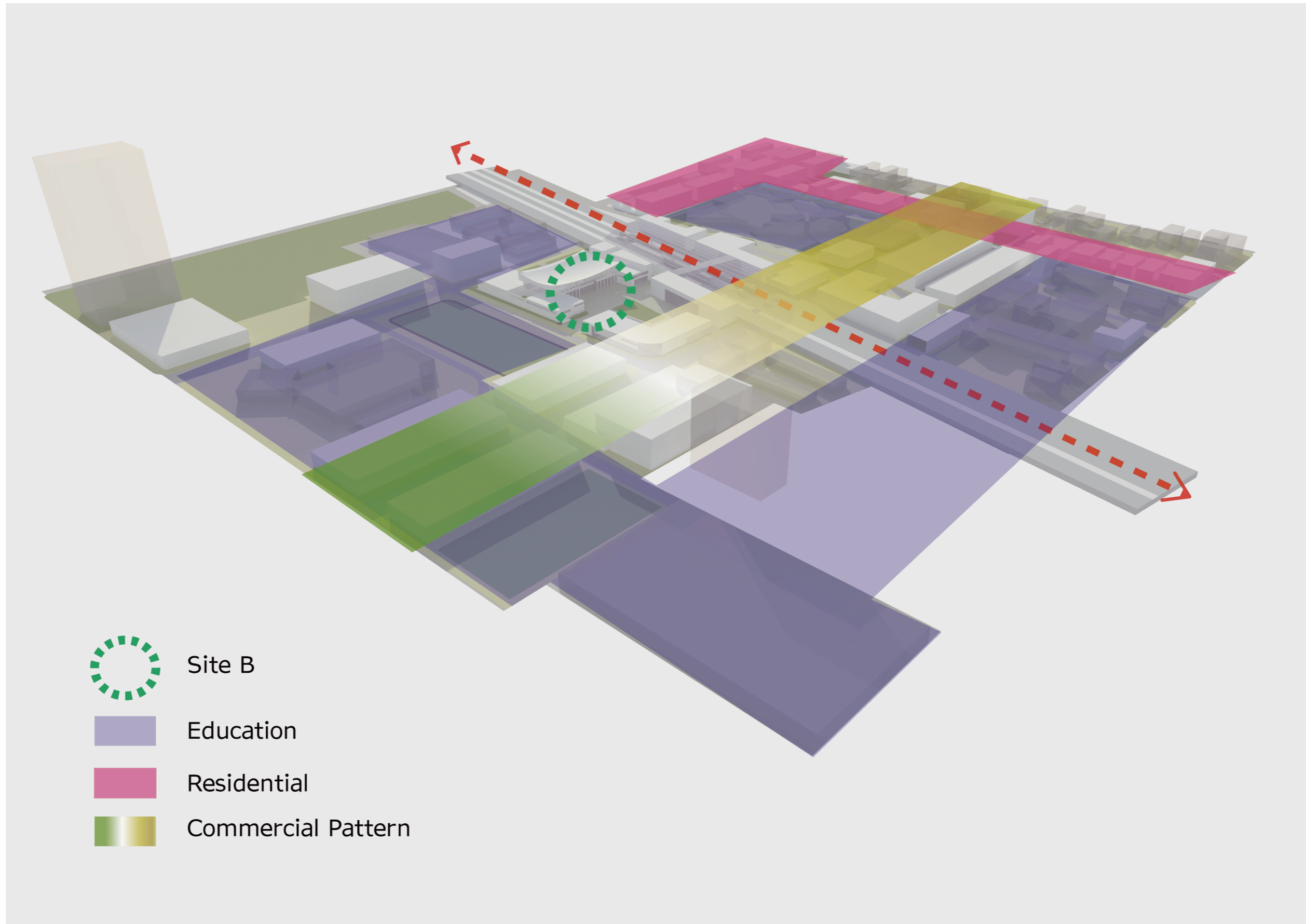
STRATEGIES

- REBUILD 63rd TRAIN STATION
- REMOVE EXISTING CAR PARKS SURROUNDING THE ARE
- BUILD NEW UNDERGROUND CAR PARKING DEVELOP
- COMMERCIAL ZONE AND RESIDENTIAL AREA



OBAMA PRESIDENTIAL CENTER
PRESIDENTIAL LIBRARY
Lu Mengyu

Design concept

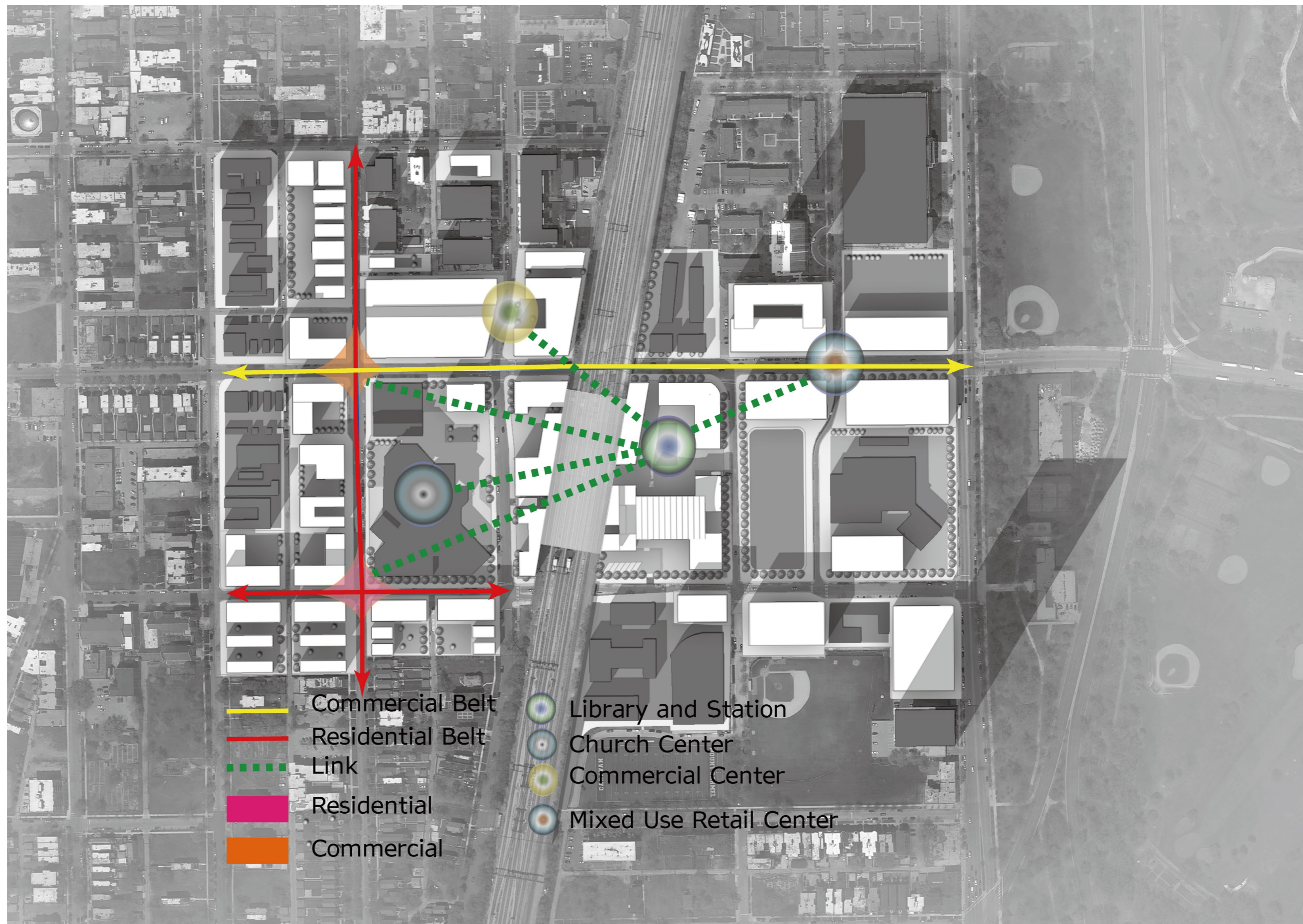




OBAMA PRESIDENTIAL CENTER PRESIDENTIAL LIBRARY

Lu Mengyu

Core Concept Structure

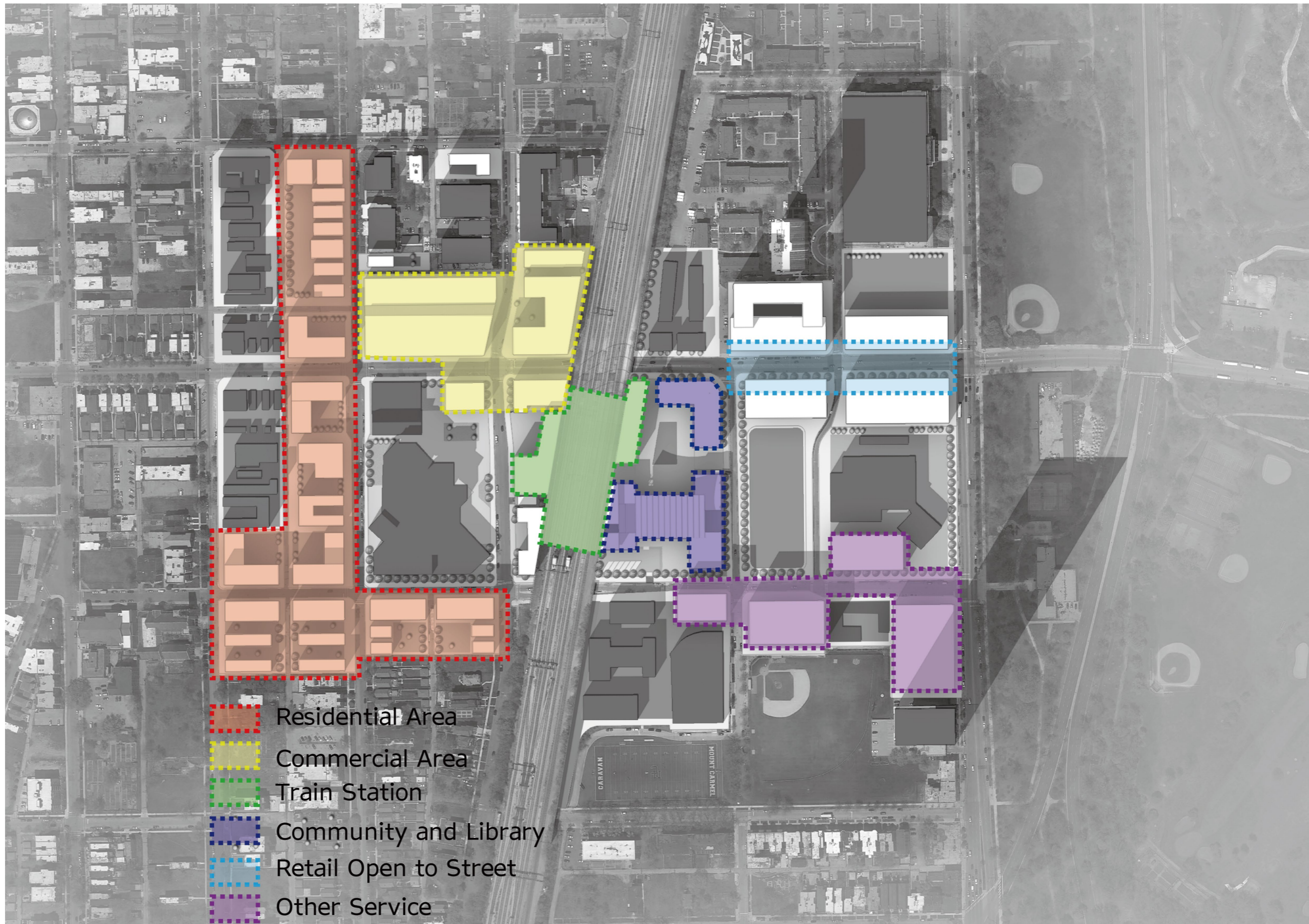




OBAMA PRESIDENTIAL CENTER PRESIDENTIAL LIBRARY

Lu Mengyu

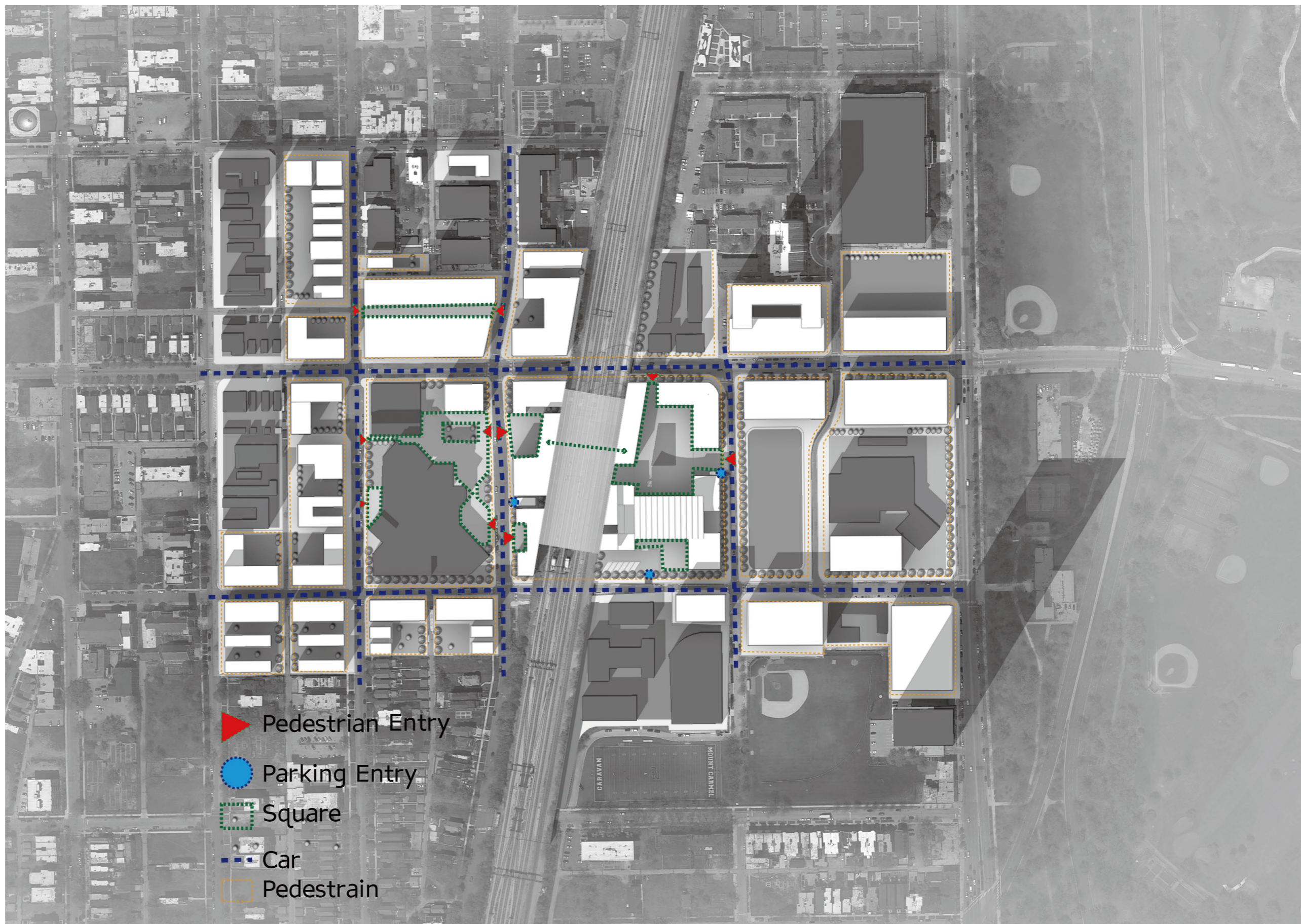
Proposed Land Use



OBAMA PRESIDENTIAL CENTER PRESIDENTIAL LIBRARY

Lu Mengyu

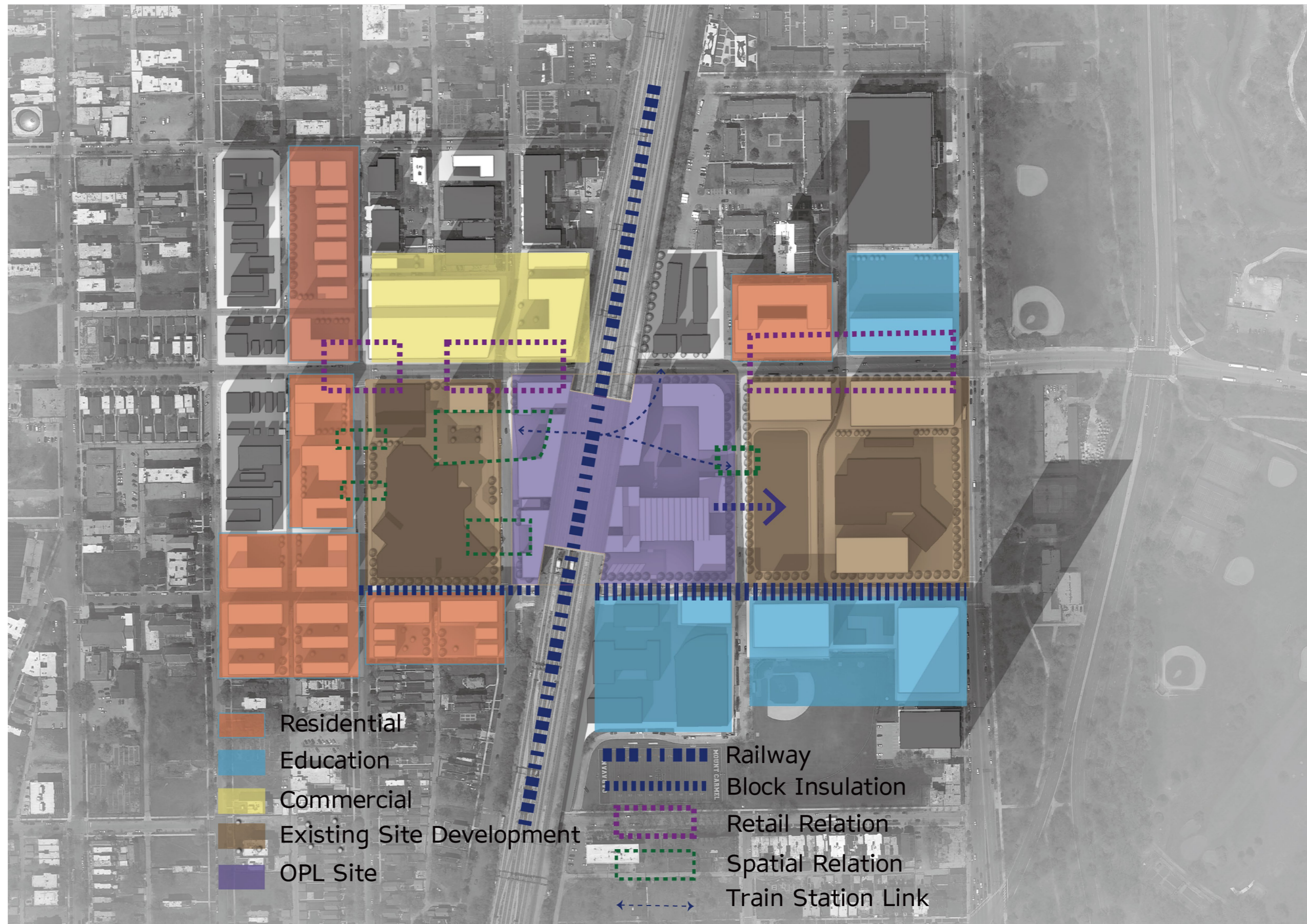
Proposed Accessible Structure





OBAMA PRESIDENTIAL CENTER
PRESIDENTIAL LIBRARY
Lu Mengyu

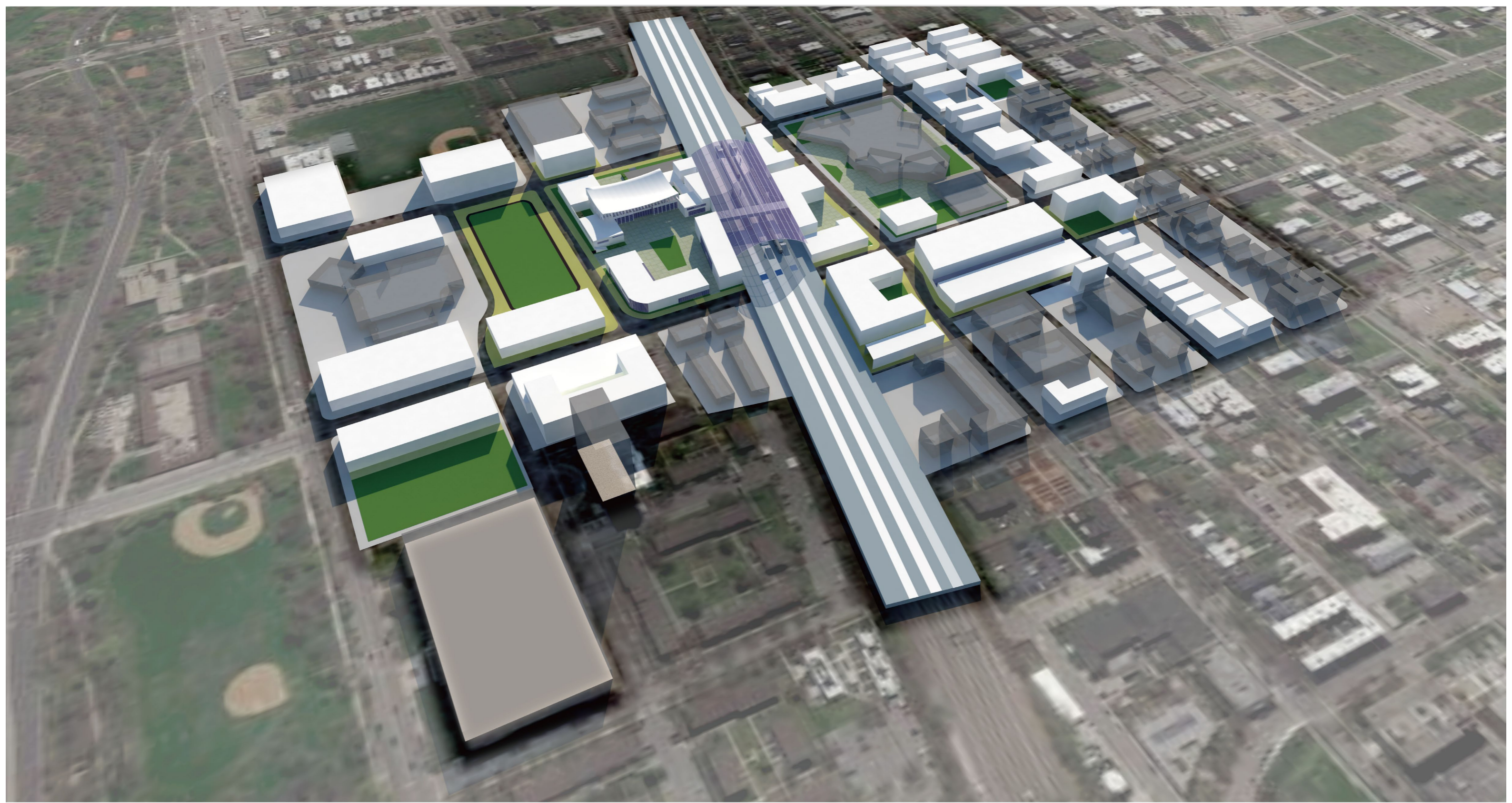
Proposed Design
Final Analysis
and Relationship





OBAMA PRESIDENTIAL CENTER
PRESIDENTIAL LIBRARY
Lu Mengyu

Perspective



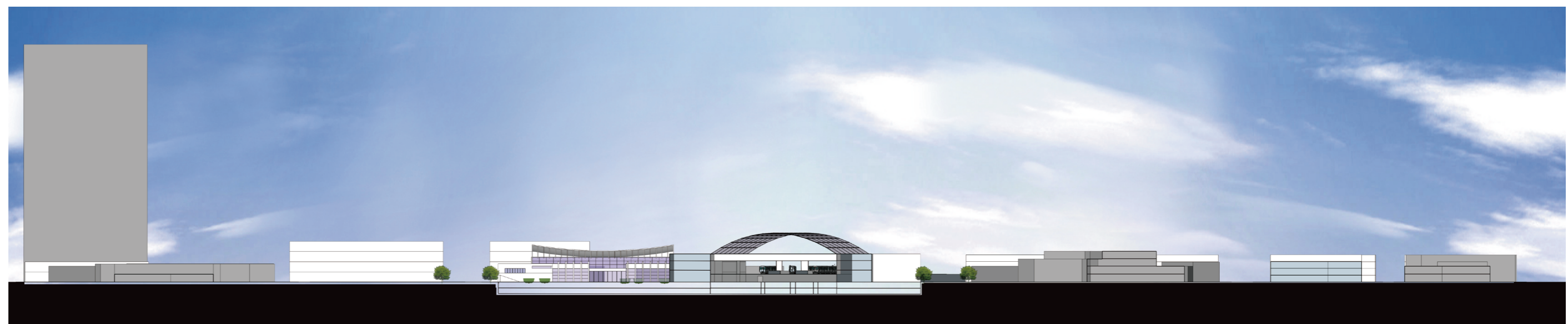


OBAMA PRESIDENTIAL CENTER
PRESIDENTIAL LIBRARY
Lu Mengyu

City View



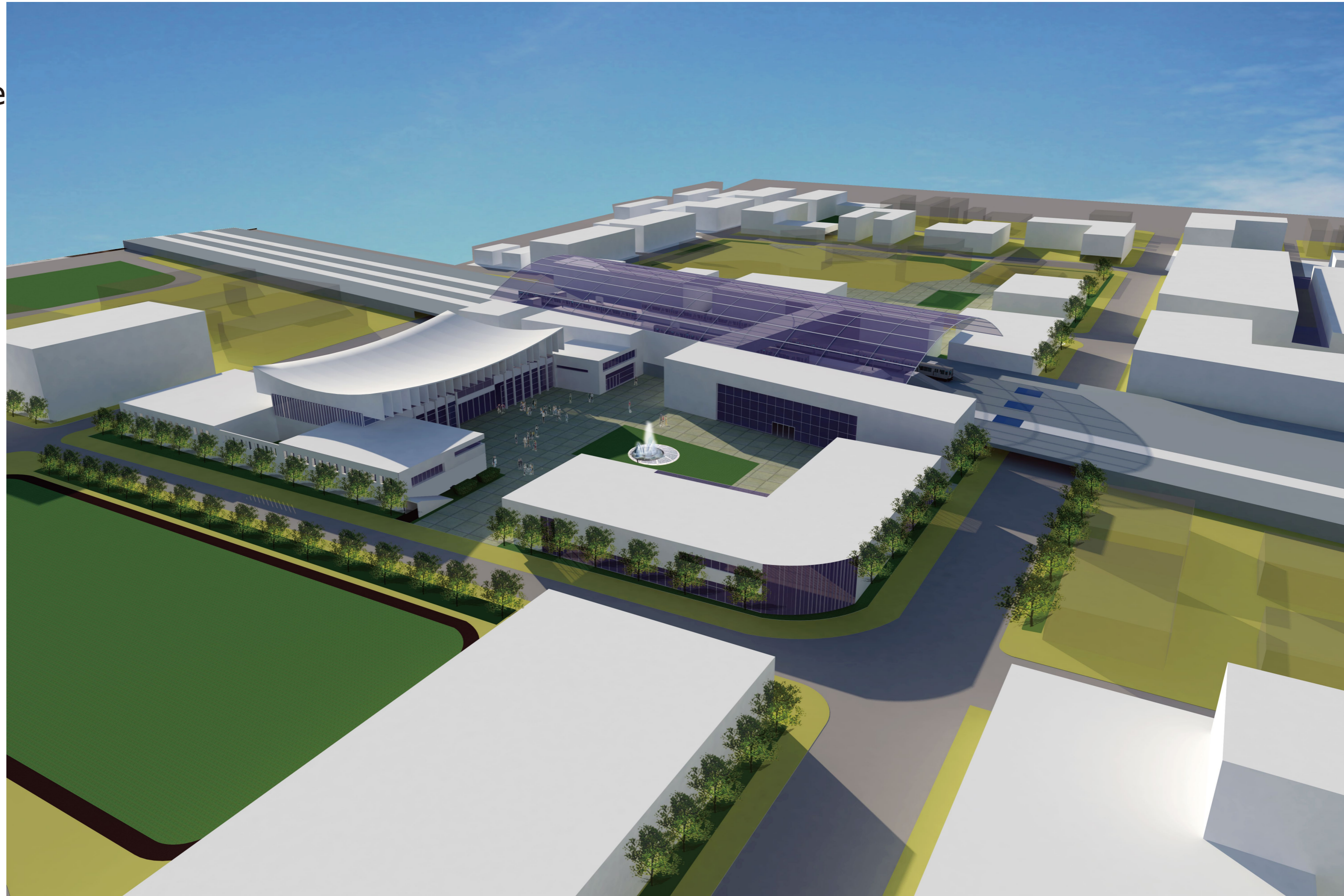
City Section





OBAMA PRESIDENTIAL CENTER
PRESIDENTIAL LIBRARY
Lu Mengyu

Library
Site
Perspective





OBAMA PRESIDENTIAL CENTER
PRESIDENTIAL LIBRARY
Lu Mengyu

Library
Site
CGI

