

CHICAGO OBAMA PRESIDENTIAL CENTER
JACKSON PARK
Zheng Yawen

Group member: Lu Mengyu, Megaharto Harpandi, Zheng Yawen

The Barack Obama Foundation announces plans to locate the future Barack Obama Presidential Center, which includes a museum, library, and office space for Foundation activities and events, on the South Side of Chicago. Within Chicago, the Obama Foundation will additionally explore possible collaboration with the University of Illinois–Chicago.



Vision:

The Barack Obama Foundation... will both plan and develop a Presidential Centre for future activities, including the Presidential Library, a museum and broader campus, and engage in activities reflecting President's Obama's and the First Lady's values and priorities throughout his career in public service: expanding economic opportunity, inspiring and ethic of American citizenship, and promoting peace, justice and dignity throughout the world.

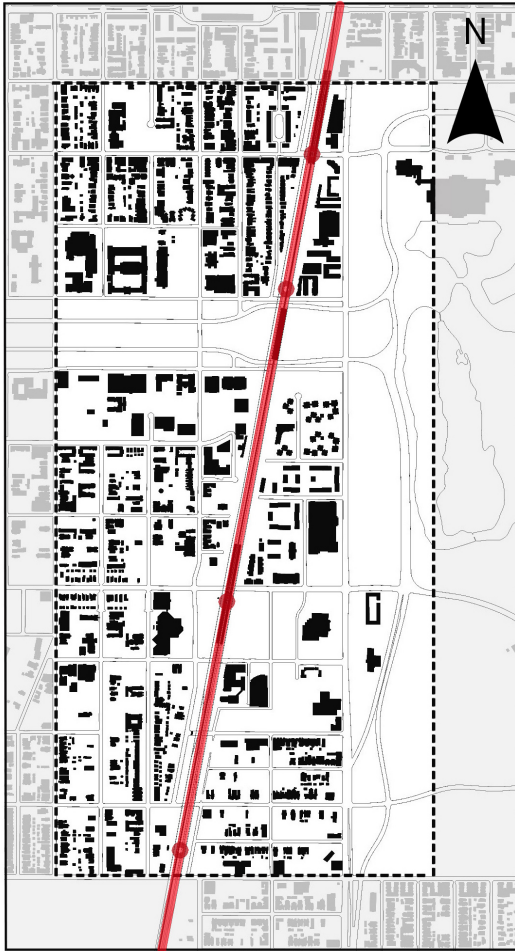
The Foundation envisions a Presidential Centre that, through its mission, initiatives and physical and virtual presence, advances and interprets the themes of civic engagement, global perspective, health and wellness, environmental stewardship, public education, a spirit of innovation, and will become an anchor for economic development and cultivate a strong relationship with the library's surrounding community.

(Obama Foundation)

CHICAGO OBAMA PRESIDENTIAL CENTER JACKSON PARK

Zheng Yawen

RAIL LINE



- The METRA
- TRAIN STATION
- BOUNDARY
- ROAD
- BUILDING

WALKABLE DISTANCE



- The METRA
- TRAIN STATION
- 400M WALKABLE DISTANCE
- 800M WALKABLE DISTANCE
- BOUNDARY
- ROAD
- BUILDING

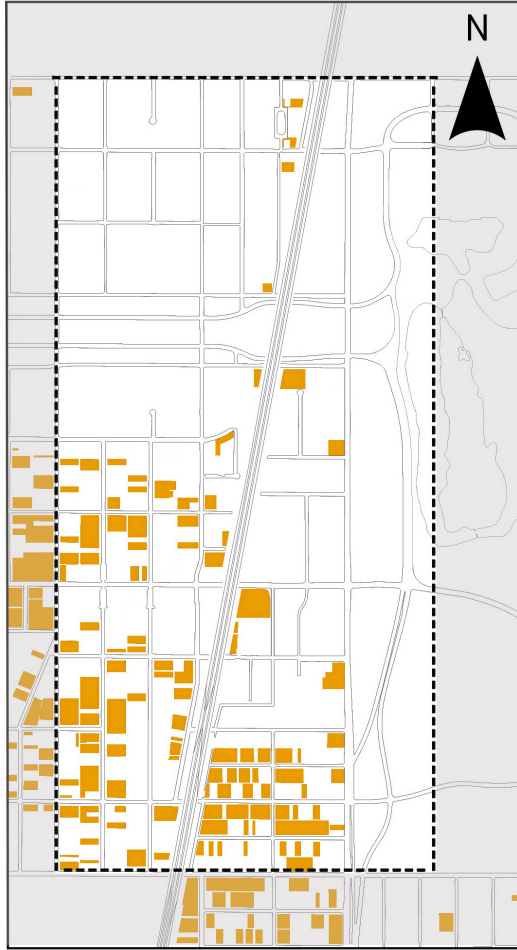
BUS ROUTES



- BUILDING
- BUS ROUTE NO.2
- BUS ROUTE NO.6
- BUS ROUTE NO.15
- BUS ROUTE NO.28
- BUS ROUTE NO.59
- BOUNDARY
- ROAD
- BUS ROUTE NO.63
- BUS ROUTE NO.67
- BUS ROUTE NO.172

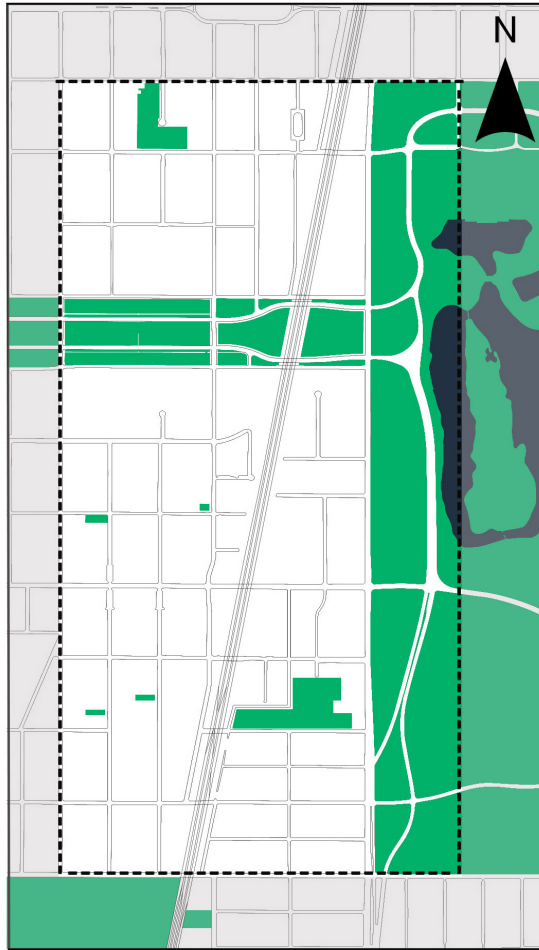
CHICAGO OBAMA PRESIDENTIAL CENTER JACKSON PARK Zheng Yawen

VACANT LAND 0 100 200 400 600 800m



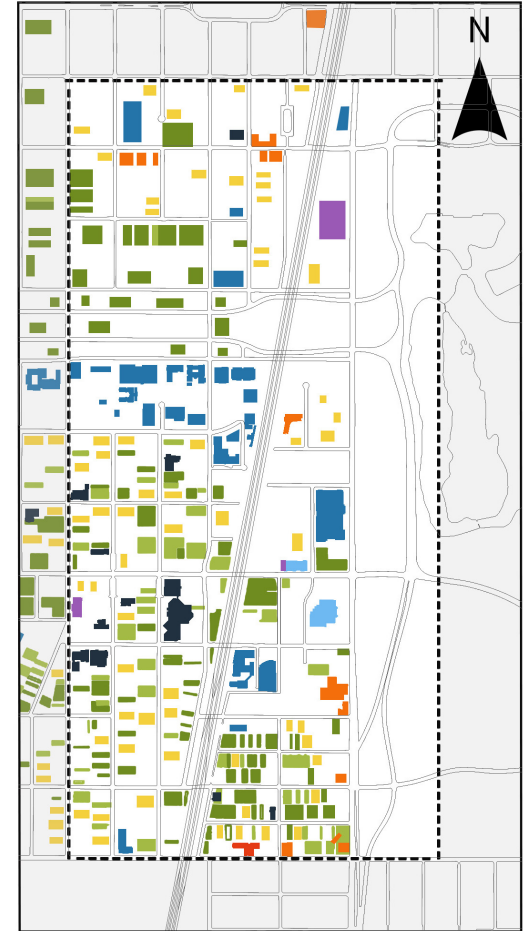
- VACANT LAND
- BOUNDARY
- ROAD

PUBLIC OPEN SPACE 0 100 200 400 600 800m



- PUBLIC OPEN SPACE
- WATER
- BOUNDARY
- ROAD

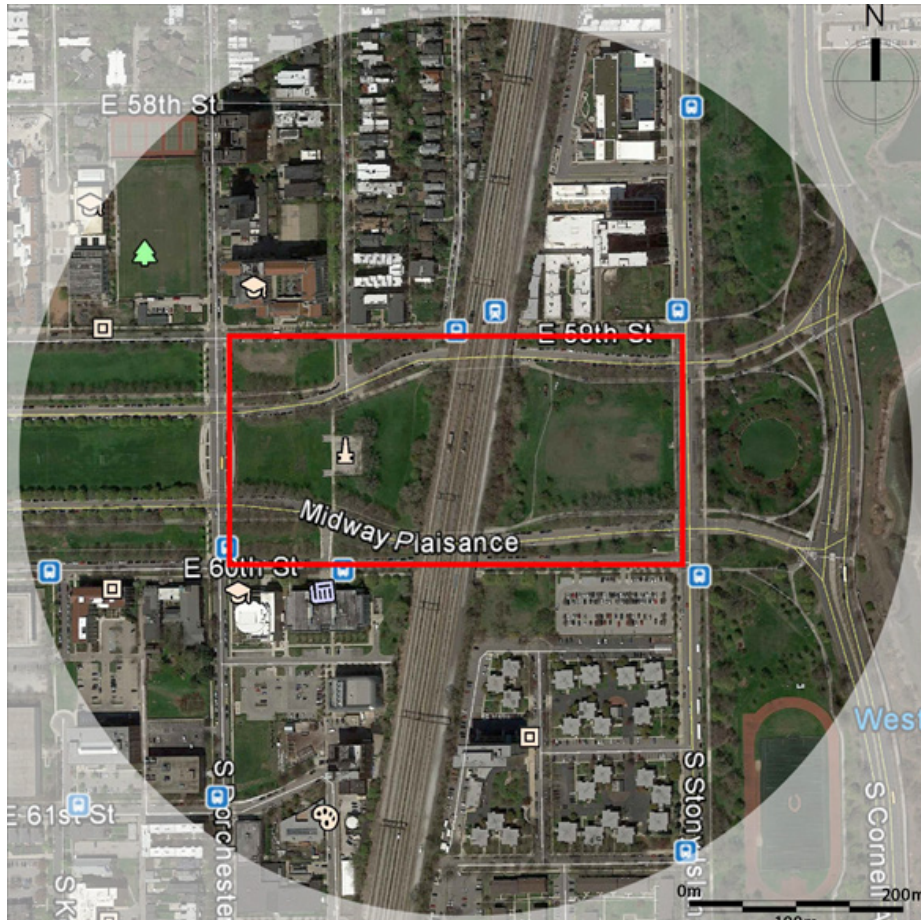
LAND USE 0 100 200 400 600 800m



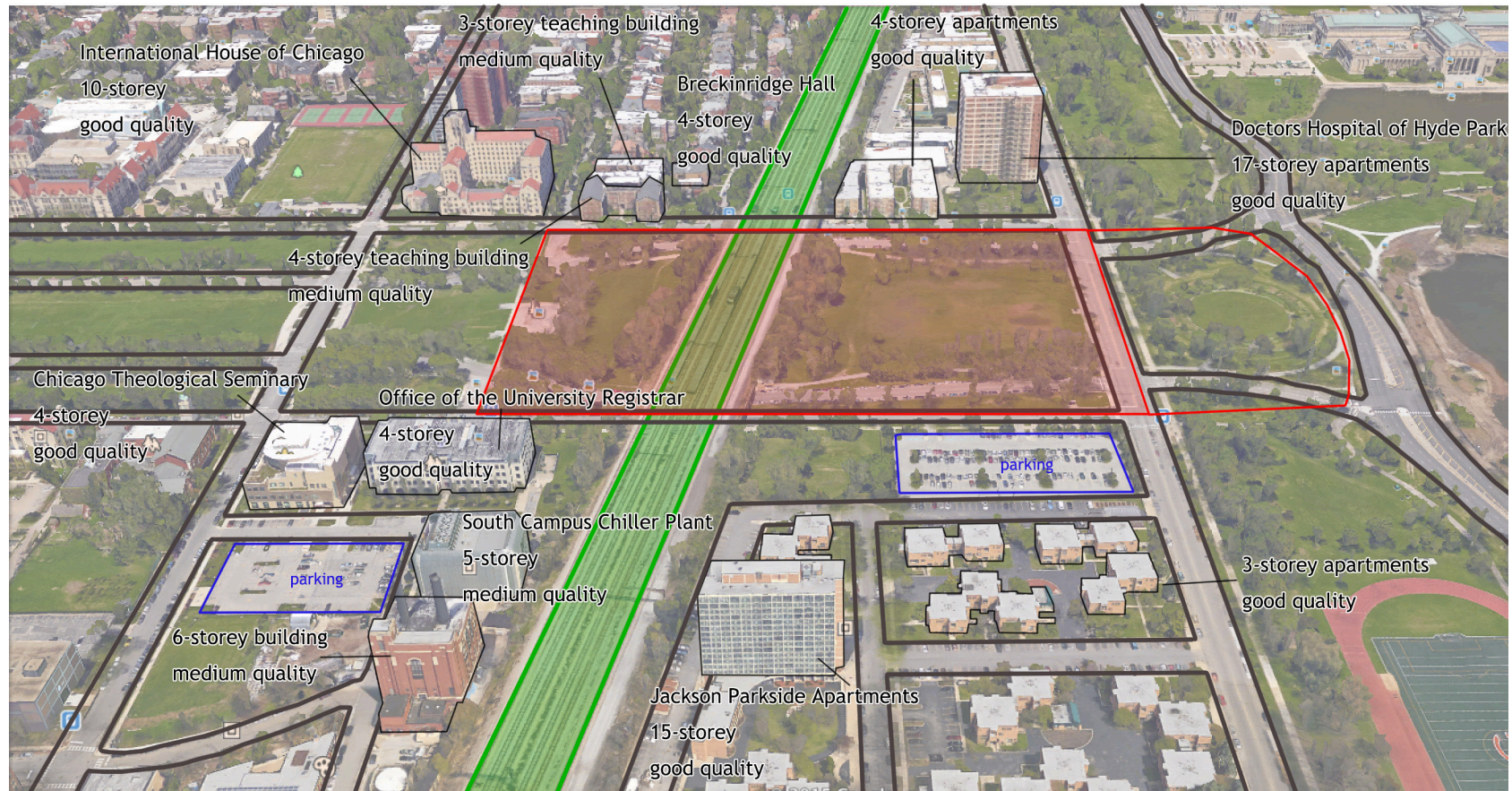
- Community Institution
- Religious Institution
- Educational Institution
- Fire Station
- Hospital/Medical Institution
- Commercial
- BOUNDARY
- ROAD
- Private Vacant Lot
- Public Vacant Lot
- Park
- Residential

CHICAGO OBAMA PRESIDENTIAL CENTER
JACKSON PARK
Zheng Yawen

Midway Plaisance Site

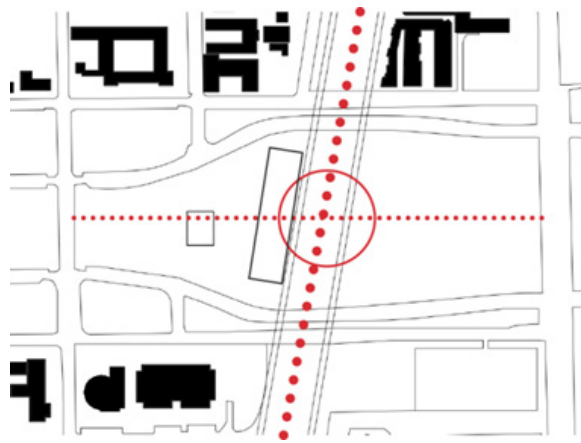


CHICAGO OBAMA PRESIDENTIAL CENTER
JACKSON PARK
Zheng Yawen



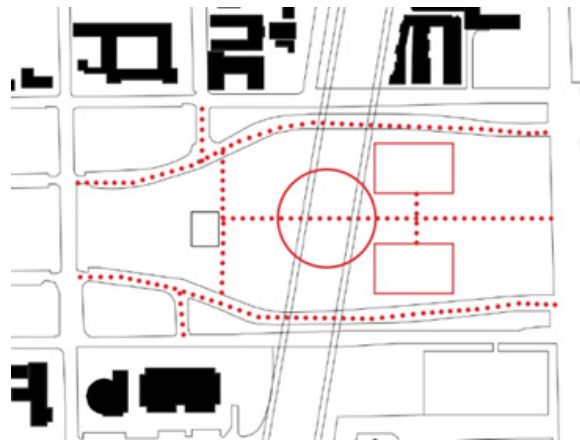
The site is at the end of the Midway Plaisance, surrounded by the University of Chicago, Jackson Park and Woodlawn Community. Near the site, there are a 17-storey apartment in the north as well as a 15-storey apartment in the south.

RAIL CONNECTIVITY



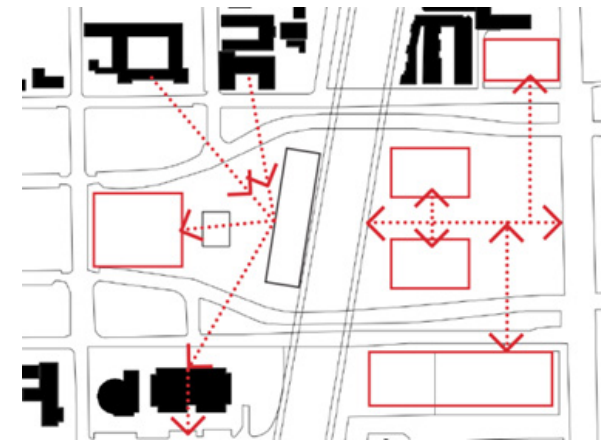
Close up existing station entrance in 59th Street
 Create new station that connects to the proposed center

PEDESTRIAN & SURROUNDING USE



Close up Midway to become pedestrian only road
 Create access & orientation that reflects the changes

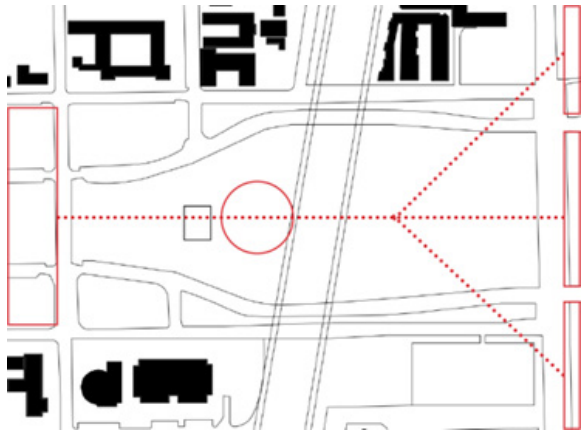
INTERACTION & ACTIVATION



The center should interact with the new program surrounding the site and activate unused space

CHICAGO OBAMA PRESIDENTIAL CENTER
 JACKSON PARK
 Zheng Yawen

OPEN SPACE RELATIONSHIP



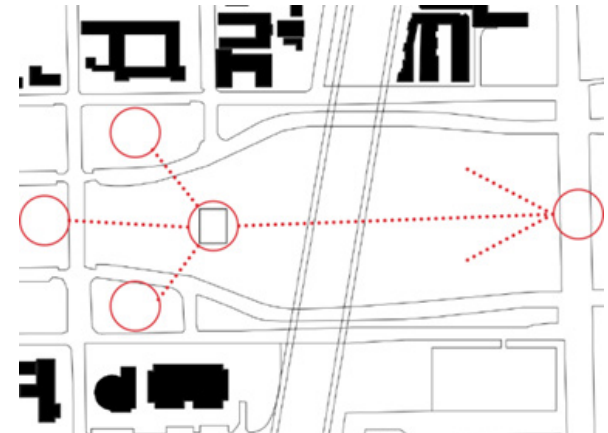
Design should respect existing open space and should be able to interact with it.

SCALE



Building height control to not impose the existing height of neighboring building.

KEY VIEWS



The center should conserve the prominent view of the Masaryk memorial and the principal vistas in respect with the Olmsted design

CHICAGO OBAMA PRESIDENTIAL CENTER JACKSON PARK

Zheng Yawen

URBAN DESIGN FRAMEWORK



SOCIAL & ECONOMIC ENGINE



OBJECTIVES

CONNECTING OPC WITH THE COMMUNITY
BECOMING AN INTERNATIONAL DESTINATION
PROVIDE OPPORTUNITY FOR REGIONAL
GROWTH
ACTIVATION OF STREET AND SURROUNDING
USES

PRECEDENTS



WORLD'S
COLUMBIAN
EXPOSITION

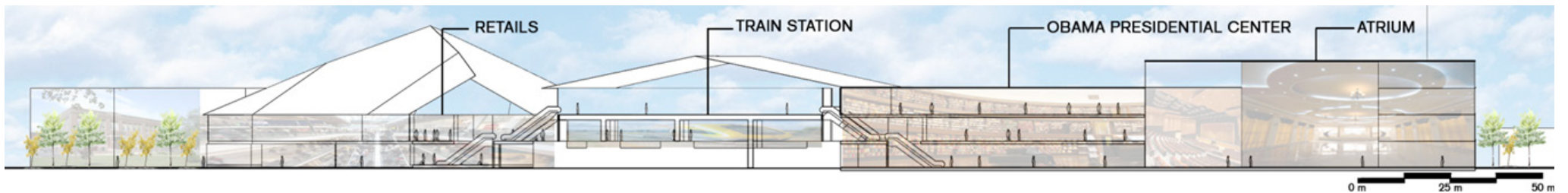


OLMSTEAD
PLAN

STATISTICS

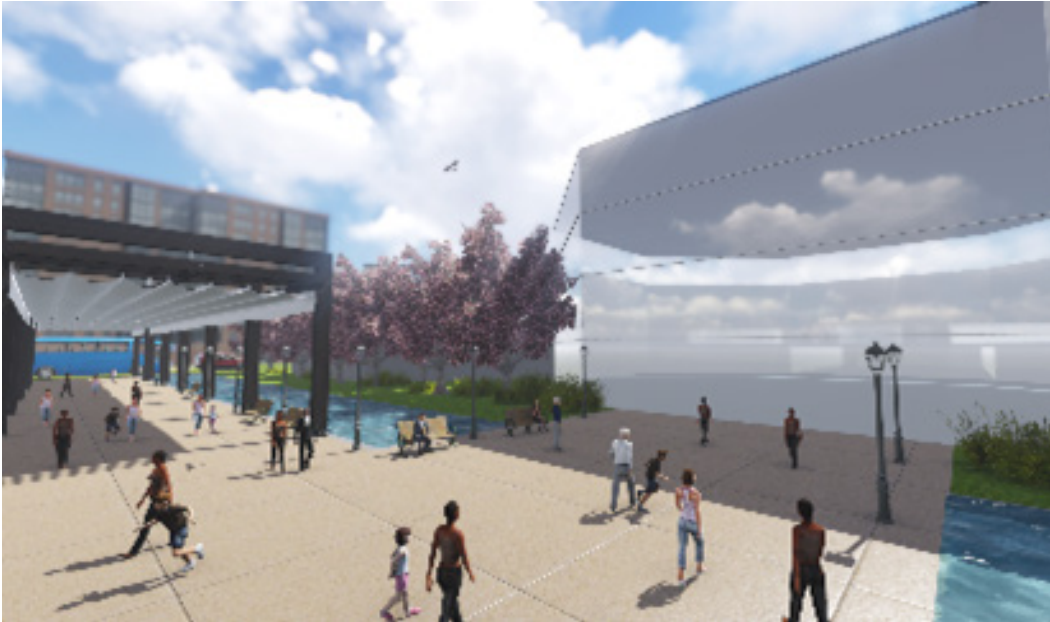
1. PRESIDENTIAL CENTER: 20.000m²
2. TRAIN STATION: 5200m²
3. RETAIL: 4500m²
4. HOTEL: 900m²: 10 STOREY
5. CREATIVE HUB: 4500m² + 4000m²
6. MIXED USE PEDESTRIAN MAL: 5800m²
7. MARKET PLACE: 10.000m²:4 STOREY
8. AIRPORT DISTANCE: 39.7km
9. CBD DISTANCE: 12.5km

SECTION A-A



CHICAGO OBAMA PRESIDENTIAL CENTER
 JACKSON PARK
 Zheng Yawen

OBAMA PRESIDENTIAL CENTER



TRAIN STATION



CREATIVE HUB DISTRICT



EAST ELEVATION

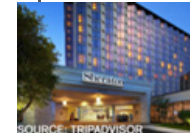


WEST ELEVATION



CITY OF SYDNEY
 CREATIVE HUB

SHERATON
 HOTEL



SOURCE: TRIPADVISOR



PALACE OF FINE
 ARTS

QUEEN VICTORIA
 MARKET

