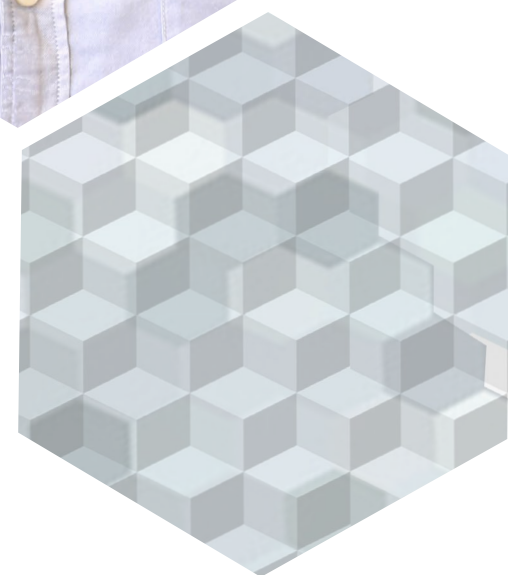




DESIGN PORTFOLIO 2007-2016

ABDUL FAHIM BIN RAZALI

URBAN DEVELOPMENT AND DESIGN + LANDSCAPE ARCHITECTURE



ABDUL FAHIM BIN RAZALI

"Urban Design and Landscape Architecture are two emerging fields in which both look upon development issues and site potentialities for it to contribute to cohesive development and condusive environment"

Nationality

Malaysian

Language Competency

English
Arabic
Malay

Education Background

2015-2016

University of New South Wales, Australia
Master of Urban Development and Design

2010-2012

Universiti Teknologi Malaysia
Bachelor of Landscape Architecture
First Class Honors

2007-2010

Universiti Teknologi MARA, Malaysia
Diploma in Landscape Architecture
Distinction

2000-2009

Maahad Muar Secondary School, Malaysia
Malaysia Educational Certificate
Pass

Skills

Manual Drawing and Sketches

Computer applications:

Auto CAD, Vectorworks, Sketch up, iMovie, Adobe Photoshop, Adobe Illustrator, Adobe Indesign, Lumion & Microsoft Office

Activities, Achievements & Awards

Top 3 Finalist of Youth Urban Innovation Australia (George Street 2020 by ULI)
George Street Craft with Christian Vitulli

Institute of Landscape Architects Malaysia Academic Awards 2012

Deans Award from Universiti Teknologi Malaysia, 50th Convocation

Best Final Year Student & Designer of Bachelor of Landscape Architecture 2012

Paper Presenter at International Federation of Landscape Architects
(IFLA Asia Pasific Region) Cultural Landscape Symposium (INCULS 2012)

University Representative of The Harmony Concept of Islamic, Modern and Culture for Sustainable Architecture in collaboration with University Muhammadiyah of Surakarta Indonesia

Employment

April-July 2011

Internship Trainee at Provinca Landscape Design, Johor, Malaysia

Febuary - May 2012

Landscape Designer for Johor Technical Matriculation College

July - September 2012

Internship Trainee at Sitetectonix Private Limited, Singapore

September - December 2012

Research & Teaching Assistant for Dr. Hamidah Ahmad(Phd), Universiti Teknologi Malaysia

January 2013- January 2015

Landscape Architect at Sitetectonix Private Limited, Singapore

Key Personnels

Dr. Hamidah Ahmad

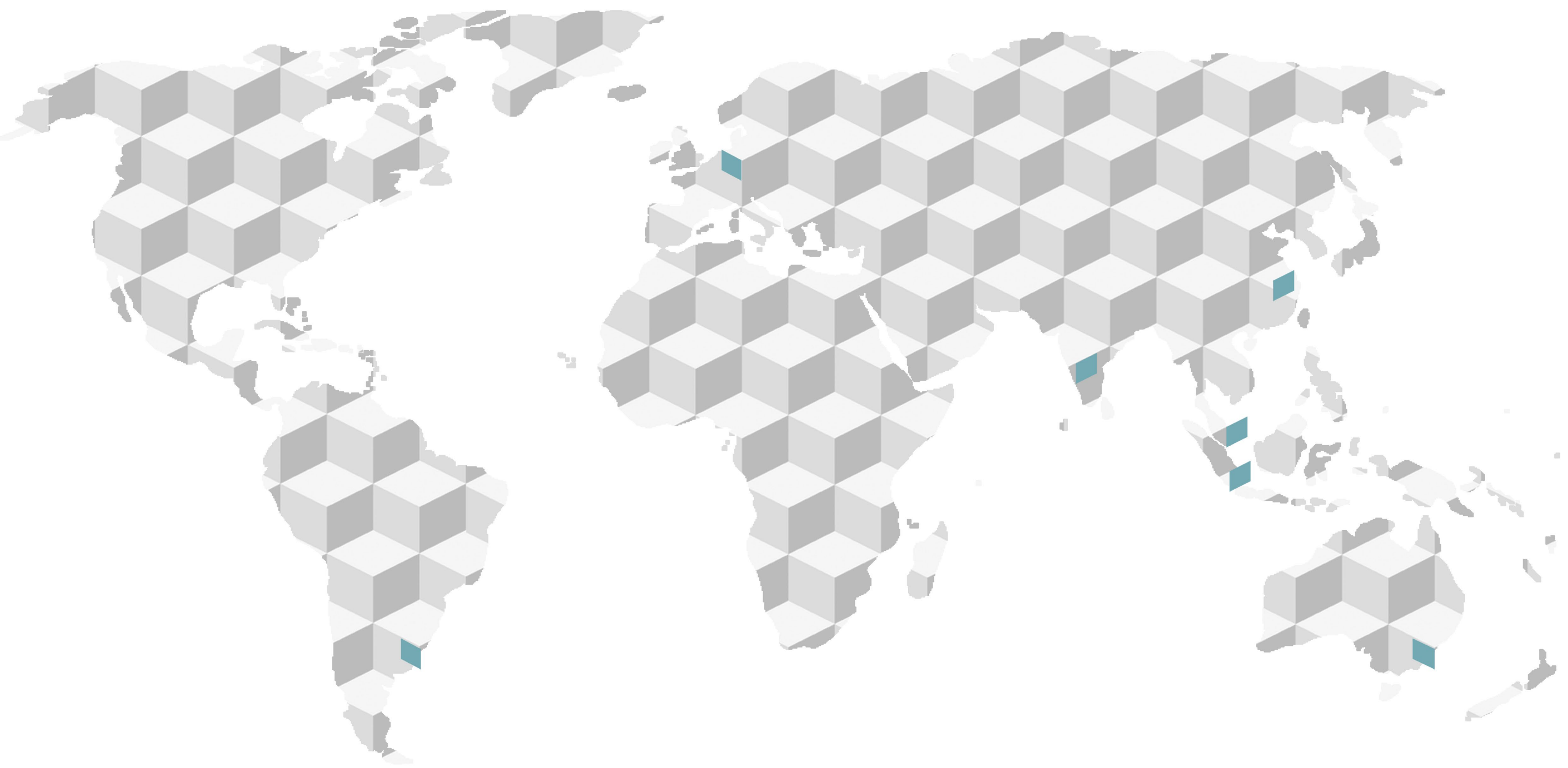
Senior Lecturer
Department of Landscape Architecture,
Faculty of Built Environment,
Universiti Teknologi Malaysia
Tel. No : (60) 1 3722 2216
Email : b-hamidah@utm.com.my

Helen Smith-Yeo

Principal & Landscape Architect
Sitetectonix Private Limited,
Singapore
Tel. No : (65) 6327 4452
Email : helensmithyeo@sitetectonix.com

Dr Scott Hawken

Lecturer of Urban Development and Design
Faculty of Built Environment
University of New South Wales
Tel. No : (61) 2 9385 4747
Email : s.hawken@unsw.edu.au



LIST OF PROJECTS

South America

Studies of Urban Form : Baraccas Regeneration, Buenos Aires, Argentina

Germany

Urban Nucleus : Neighbourhood Revitalisation of Prenzlauer Berg, Berlin

Australia

Rubiks Route : Feasibility Study & Landscape Structure Plan of Wynyard Axis, Sydney

George Street Craft : Youth Urban Innovation Competition by Urban Land Institute

Malaysia

Kuala Linggi Heritage Landscape Conservation and Revitalisation

Pontian Besar Urban Maritime Village, Johor

Heritage Eco-City, Malacca

PROFESSIONAL PRACTICE

(Landscape Architect at Sitetectorix Pte Ltd, Singapore)

India

Casabella Residential Development (Streetscape), Mumbai

Experia Mall Rooftop Garden, Mumbai

Ashok Hinjewadi Residential Development, Pune

China

Suzhou 4HA Residential Development, Suzhou

Singapore

Prince Charles Crescent Condominium

The Panorama, Ang Mo Kio

Residential Hall, Nanyang Technological University



BARRACAS REGENERATION, BUENOS AIRES

Barracas urban regeneration started with self critique of previous proposals of International Studio Program held in Buenos Aires. Barracas was known as an art and industrial residential hub in Buenos Aires which currently growing in slums population.

There are several issues found on site, they are isolated train station, bus terminal and redundant freight facilities in which it relates to poor connection of public transport leaving the site disconnected from the rest of the city. It also houses abandoned warehouses, under-utilised hospitals and medical institutes which was affected by high volume of noise and air pollution from the industrial activities carried on

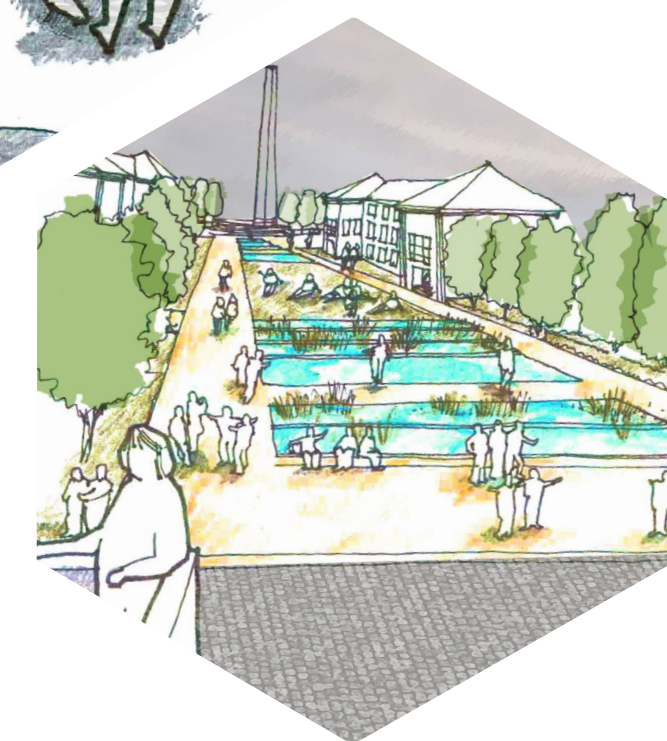
AIM & OBJECTIVES

The development aims to regenerate the industrial seam of Barracas as a viable urban neighbourhood : one that promotes economic development and social integration.

The aim of the project suggests several objectives such as revitalising the existing abandoned site into a vibrant liveable community that integrates with the surrounding urban fabric and that also acknowledges the current economic growth on site. Urban regeneration of Barracas also include improvisation of public transportation networks within and around the site as well as creating a neighbourhood that focuses on affordable housing for a mix of inhabitants to meet the issue of disparity in the levels of income that Buenos Aires is facing.

The development also tends to strengthen the existing medical campus spaces to become an urban campus with associated public plazas and recreational landscape as well as creating a commercial and a retail precinct that incorporates a highly active public domain along the railway connection. It also upgrade the existing football stadium into an energetic sports hub by incorporating a sports complex and enhance the economic and socio-cultural aspects of the historic neighborhood of Barracas, which supports future development, in turn enhancing the vibrancy of the southern Buenos Aires.





Sketches follow a spatial sequence from the market place at the south west of the site towards the medical campus through the train station and the cafes.

The proposed regeneration for Barracas comprises of several interesting design interventions;

MARKET PLACE AS A CONNECTION CORRIDOR TO THE SLUM COMMUNITY

A pedestrian mall is created from the proposed entry point of Barracas to the market place. This corridor allocates lots for the slum community to set up space for the sale of local products establishing a cultural corridor that will strengthen the genius loci.

THE ESTACION

The terminal precinct consists of a mix of uses including a landmark building that radiates outward into different pedestrian paths and roads which forms the basis of the site structure.

HERITAGE LOCOMOTIVE WALK

The provision of strong pedestrian links play an integral part in shaping the character of the site and ensuring the creation of strong vistas, ease of circulation and activation of spaces that will promote the sites popularity in future.



RUBIKS URBAN LANDSCAPE PLAN WYNYARD AXIS, SYDNEY

Recent urban development trends tend to enforce livable pedestrian connectivity along with pedestrianisation of George Street and light rail line reinstatement in which neglecting potential connectivity to Barangaroo development. We see opportunity to connect George Street pedestrianisation project with Barangaroo through Wynyard Place redevelopment.

AIM & OBJECTIVES

The project aims to create a dynamic and integrated urban fabric in the heart of Sydney that provides opportunities for people to live, work and play. The aim objectifies in creation of robust street level pedestrian experience by providing options of street level activities and emphasising connections between Wynyard Place to Barangaroo by providing unique character of streetscape in accordance to Sydney Special Character Area. It also provides strong public domain bond with ground surface plane and sub-surface ground plane from George Street to Wynyard Station as well as providing interactive digital wayfinding elements as part of pedestrians visual cues from one point to another

Aside from that the project also introduces dynamic public realm by creating a small-retails activities and more humanise street activities as well as considering water sensitive urban design into production of public domains.





INTEGRATED LANDSCAPE APPROACH, A DYNAMIC SYDNEY

This concept adapts to the existing city layout and compliments the surrounding developments on George Street. The cohesion of the North South George Street Axis and the East West Axis will create a vital creative, social and commercial core for the City.

DESIGN OUTCOMES & STIMULATED GROWTH

The capital stimulation that will be an outcome of the integrated design elements will maintain an activated and buzzing environment, in and around George Street and the Wynyard Axis. This in turn will attract and increase the number of customers and tenants in the downtown area and create an environment that stimulates creativity and individuality, through the transformative streetscape elements. The reinvigoration and activation of the Wynyard axis will be the first step in the evolution of Sydney transforming into a city that sets the global standard for urban lifestyle and ingenuity.



FEASIBILITY STUDY OF WYNYARD AXIS, SYDNEY

With the upcoming Barangaroo development and George Street transformation plan to be fully pedestrianised with lightrail infrastructure. They seems to have more opportunity of looking into the east-west axis in connecting these two new development with possible amalgamation and development to cater the raising population within the city ring.

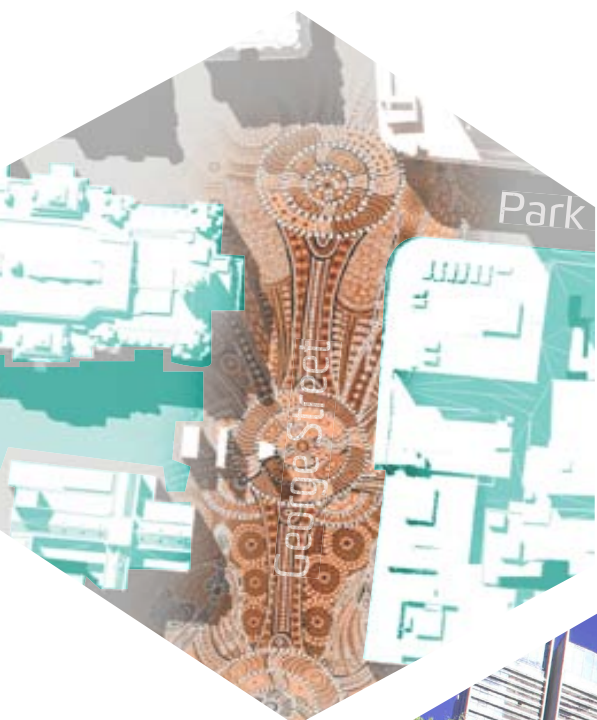
MARKET FEASIBILITY + TRENDS + SOCIO-ECONOMIC ISSUES & OBJECTIVES

In addressing major urban issues of Sydney such as inadequate housing for growing population in the city, fluctuative Australian Dollars performance, recent property investment trends with consideration of market analysis study.

The study results identification of Wynyard axis transect with future pedestrianisation of George Street and development of Barangaroo should be rejuvenated with liveable urban district. Hence, the developments should sustainably respond to the needs of Sydney-siders for them to live, work and play through a sustainable and integrated building design with multi-recreational facilities, marketplace, and livable streetscape connected surface to sub-surface place within 10 minutes walking distance. The project aims to provide sustainable urban habitat in the heart of Sydney to live, learn and work.

YORKGRANICS + FOLKS ON YORK

:"Yorkgranics" suggests the idea of bringing vertical urban farming to Sydney CBD. It has not been attempted in Sydney before. The case study that we referred to when considering this approach to a development was taken from an urban vertical farm in Singapore and one from the USA. Commercialised urban farming is becoming increasingly a profitable and viable option for new business opportunities. While "Folks on York" idealises livelihood in a building as a place for the citizen to live and play through a sustainable and building design integrated with recreational facilities which accessible within 10 minutes walking distance.



URBAN STREET CRAFT

George Street Urban Innovation Ideas Competition
Finalist (Top 3)

The selected site for the design proposal is located on George Street between Park Street and Bathurst, at the Southernmost end of the pedestrianized portion of George Street. The location was selected due to its close proximity to Town Hall, Town Hall station and the Queen Victoria Building.

AIM & OBJECTIVES

The vision is to create a transformative urban streetscape that represents the unique, multicultural heritage of Sydney. A unique design approach will transform George Street from a traditional urban space to a unique urban place and increase the street level pedestrian activity and stimulate businesses around the site.

Subterranean surface

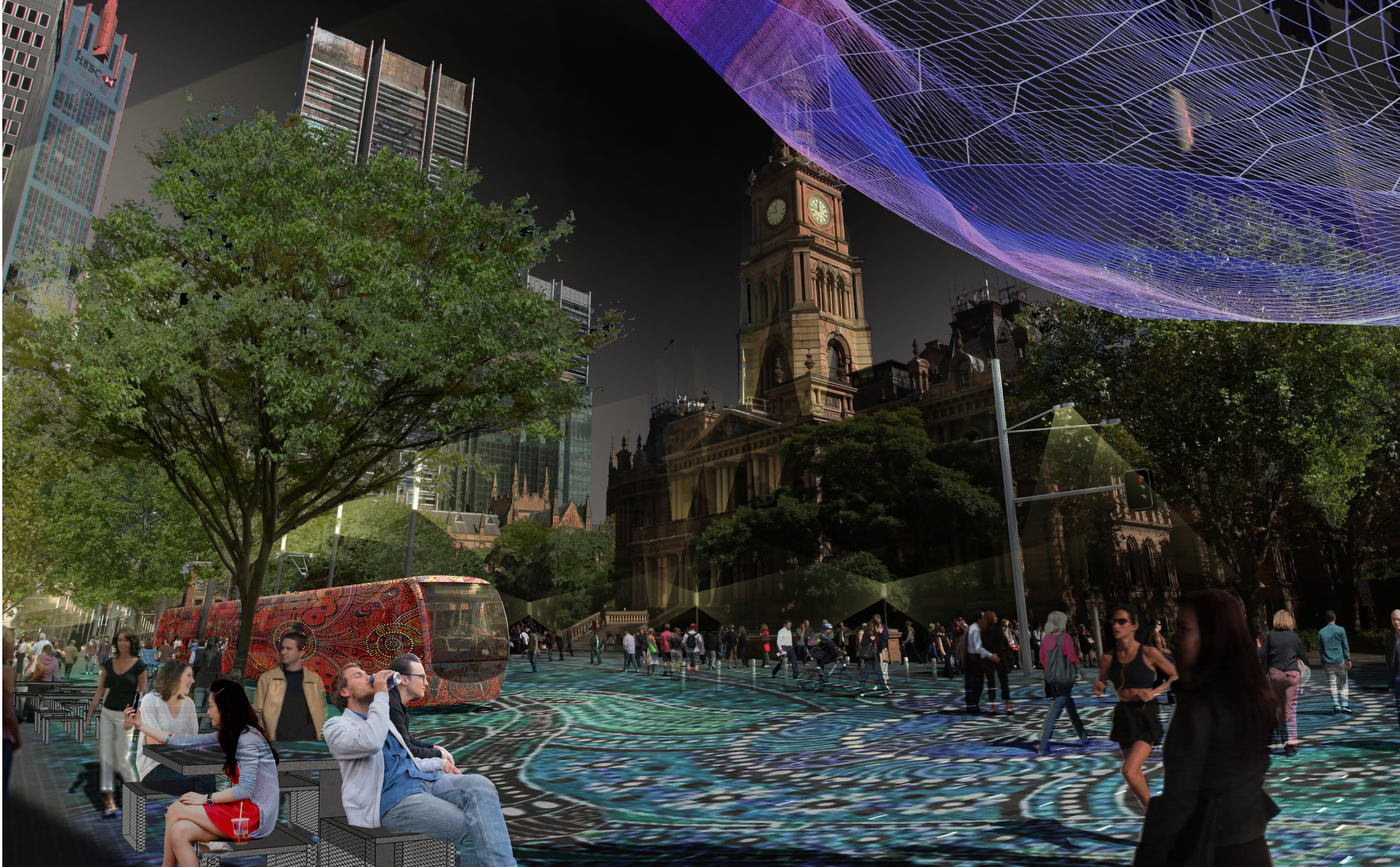
These surface elements are designed to be transformative. When they are not in use, they are flush with the surrounding paving. When the space needs to be transformed to a place, they are able to be extruded and utilized as tables, seats and surfaces to sell or showcase art or other items.

Pattern / Wayfinding

Forms for the design are derived from aboriginal art and have been translated into the design to create identifiable zones and can also be used as wayfinding devices. These patterns are in the form of digital projections and in ground led light pavers.

Digital Art

Surrounding building facades will be used as projection surfaces that activate the space and create a unique environment for the visitor.





URBAN NUCLEUS REVITALISATION PRENZLAUER BERG, BERLIN

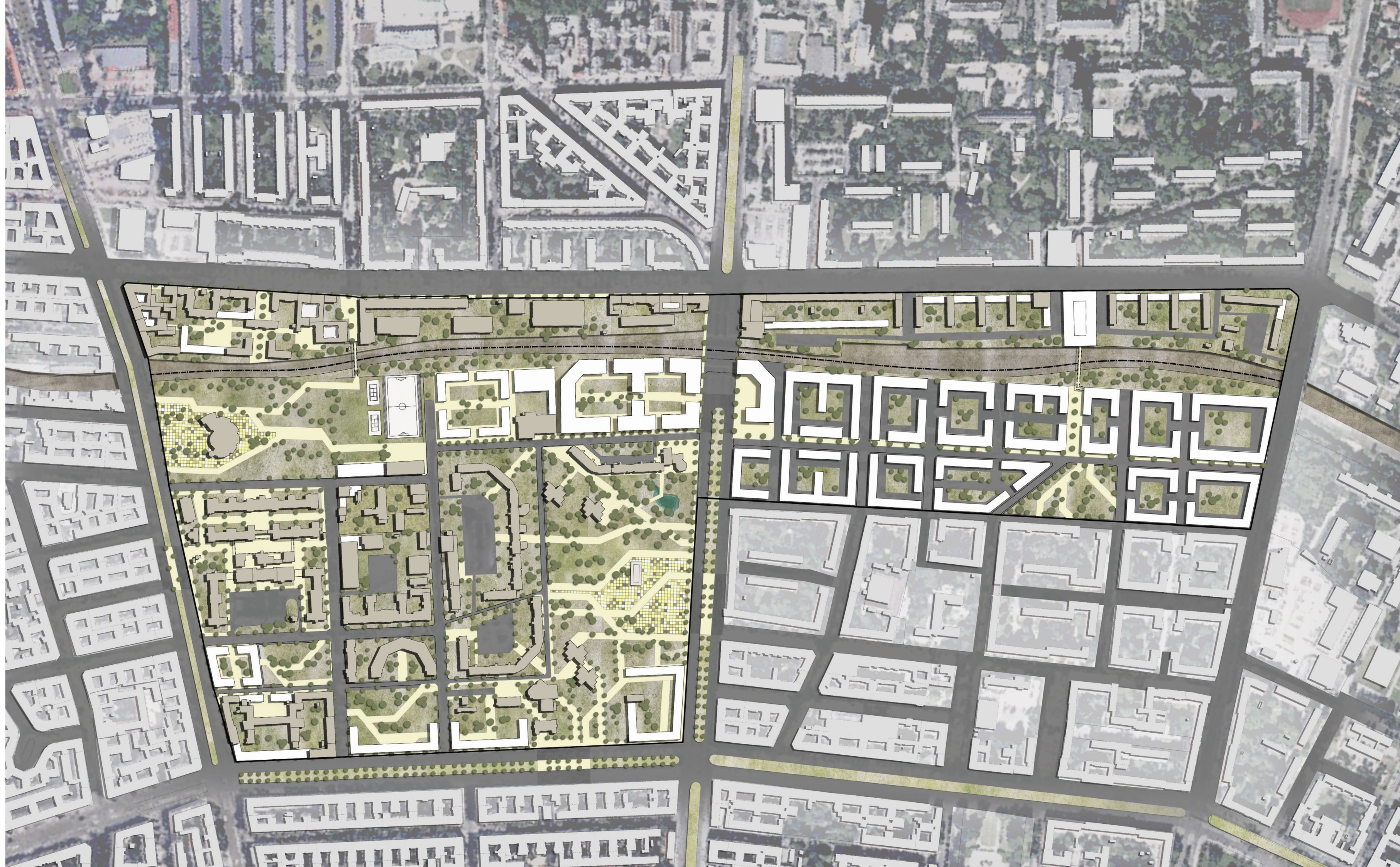
The site is located in the neighbourhood of Prenzlauer Berg in Berlin. The city of Berlin has 3.5 million inhabitants, and around 160,000 live in the area of Prenzlauer Berg. The population projection for Prenzlauer Berg shows continuous growth for the following years, as does the projection for the greater Berlin context. The site today is dominated by a DDR housing complex that has heritage protection. The site is characterised by large amounts of open space, which provide opportunities for future development of the site.

Existing assets on the site such as parks and historical buildings give the neighbourhood an identity, which should be enhanced. The proposed design aims to form a strong structural framework of building blocks and linkages and organises the unconnected spaces and functions on the site.

AIM & OBJECTIVES

Urban Nucleus is a concept developed based on a sustainable urban development ideology. This concept integrates community, ecology and economy to achieve a cohesive urban development that will create a destination for Berlin's growing population.

The concept concerns with Community, Ecology and Economy elements in which the community element concerns about defining existing fragmented DDR housing blocks by shape and frame as well as creating housing flexibility by providing flexible floor plans per unit with basic amenities so that owners can partition the unit based on their needs. The ecology component concentrates on unifying and green spaces by emphasising the connections to public domains as well as proposing renewable energy use for new housing blocks. The economic component proposes a centralised commercial core as an urban catalyst that generates active commercial corridor as well as provide job opportunities. It also enhances the Urban Heritage value by providing special uses and increasing public access through adaptive reuse of elderly homes, art gallery and cultural centre.





PROPOSED WEIGWEISER ART GALLERY

Perspective shows revitalisation of existing government complex in which the proposal enhance pedestrian connectivity through the site. It also proposes an art gallery as part of adaptive reuse of heritage element found on site.

Adaptive reuse of Weigweiser Art Gallery will integrate some existing heritage features with a glass buildings that will house a café and art gallery on previous site. The adaptive reuse of these heritage elements will then increase site value and provide job opportunities and enhance neighbourhood vibrancy from neighbouring successful Hobrecht's Blocks.



PROPOSED COMMERCIAL CORE AS AN URBAN CATALYST

Proposed commercial core to promote business activity that provide job opportunity to potential inhabitants

The commercial core will be located at the centre of the site to react as an urban catalyst by drawing attention of revitalisation project in Prenzlauer Berg that will enhance investment and promising job opportunities to the future residents. The design will react as a core that ties the urban elements on site. Its purpose is the incremental, continuous regeneration of the urban fabric. It also revitalises an abandoned bridge on site as pedestrian mall connecting two commercial buildings that will also increase indoor-outdoor connectivity to surrounding site

PROPOSED FLEA MARKETPLACE AT ERNST THALMAN PARK

Existing Ernst Thalman Park will be revitalised in terms of connectivity and landscape design to encourage permeability to the site. The flea market will allow the migrants to set up small business which will also react as social interaction space between few neighbourhoods and help to create sense of place.

Ernst Thalman Park can be considered as lost space due to its poor condition of facilities and amenities as well as lack of permeability from surrounding housing. The revitalisation of Ernst Thalman Park will be conducted in the first phase to draw attention to the site by vibrant public domain project. The park will not only be used as recreational park, but with weekend flea marketplace to encourage social interaction and cultural exchange among the residents, neighbouring residents and newcomers.



All Rights Reserved

Contributors:

Jyothsna Dhileepan + Samuel Osakwe + Christian Vitulli + Ren, Yan Fei
+ Filbert Benedictus + Kimleye Ng

Email : abdfahim89@yahoo.com

Linkedin : <https://www.linkedin.com/profile/view?id=355057478>